

Thames Valley and Wessex Primary Care School

Thames Valley

***Continuing Professional
Development***

Course Catalogue 2025/26

Contents

Meet the Team

Foreword

Continuing Professional Development (CPD)

Bloods

- Managing blood results in Primary Care
- Introduction to Phlebotomy

Cancer

- Cancer

Cardiac

- Introduction to cardiovascular disease
- Arrhythmia interpretation and management
- Managing heart failure
- ECG workshop
- Atrial fibrillation
- Heart failure update
- Hypertension
- Heart failure foundation
- Advancing coronary heart disease (CHD) care
- Advancing heart failure care
- Cardiac disease: prevention and management for non-specialists
- Coronary Heart Disease

Communication

- Advanced Communication and Supportive Relationships
- Remote Consultation and Triage for Nurses and AHPs

Dementia

- Dementia management

Dermatology

- Dermatology Update
- Fundamentals of Dermatology for Primary Care
- Getting to grips with dermoscopy (TBC)
- Dermatology for nurses and AHPs
- Spots Rashes and Skin Eruptions Seen in Primary Care

Diabetes

- Diabetes update day
- Introduction to diabetes
- Diabetes course for nurses and AHPs
- Diabetes update
- Diabetes foundation
- Advancing diabetes care
- Diabetes care
- Type 2 Diabetes Demystified

Digital Health

- Digital Skills for Digital Health

Contents

End of Life Care

- Care at the end of life
- End of life care and symptoms management
- Grief, loss and bereavement

Frailty

- Frailty - assessment, risk reduction and management
- Frailty care
- Community Rehabilitation: Healthy Ageing
- Interventions for frailty and falls

GP Nurse Update

- GP Nurse Update

Health & Wellbeing Promotion

- Advanced health promotion
- Wild Monday – Work Well Programme and Webinars

History Taking & Assessment

- Comprehensive assessment of the older person
- Assessment of the child in primary care
- Advanced history taking and assessment
- History Taking & Assessment
- Decision Making for Healthcare Settings

Immunisation & Travel Health

- Annual OVG Immunisation Seminar
- Immunisation update - National cohort Immunisations (Adult/child)
- Immunisation update - travel health
- Immunisation Update (half day)

- Immunisations and Influenza Update
- Introduction to Immunisation
- Introduction to immunisations for the registered professions
- Introduction to travel health

Independent Prescribing

- Non-medical prescribing update
- Non-medical prescribing update day
- Non-medical prescribing update

Interpreting Blood Results

- Interpreting blood results
- Understanding blood results

Leadership Development

- Three step leadership and management
- Improving the quality of healthcare
- Leadership and Management in Healthcare
- Integrated System Leadership

Lifestyle Medicine

- Lifestyle Medicine

Long-Term Conditions

- Community rehabilitation: long-term conditions
- Chronic Kidney Disease

Men's Health

- Men's Health

Contents

Mental Health

- Mental health and learning disability
- Self harm and suicide awareness
- Understanding mental health in primary care
- Managing Mental Health in Non-Mental Health Settings
- Mental Health

Minor Illness & Injury

- Paediatric minor illness: assessment and management in primary care
- Spots rashes and skin eruptions seen in primary care
- Introduction to minor illness
- Minor illness update
- Clinical management of minor injury and illness
- Assessment and Management of Minor Injuries in Primary Care
- Theory and Practice of Minor Illness Management in Primary Care

Musculoskeletal Conditions

- Musculoskeletal problems in general practice
- MSK and Chronic Pain

Older People

- Older People and Frailty

Paediatric

- Child and Adolescent Mental Health

Respiratory

- Asthma update
- COPD update
- Introduction to asthma
- Introduction to COPD
- Asthma update
- Bronchiectasis
- COPD update
- Introduction to paediatric asthma
- Asthma foundation
- COPD foundation
- Interstitial lung disease (ILD)
- Advancing paediatric asthma care
- Advancing asthma care
- Advancing COPD care

Sepsis

- Recognising a patient with sepsis

Sexual Health

- Sexual health course for nurses and AHPs

Spirometry

- Spirometry reporting & interpretation the 7 steps
- Performing paediatric spirometry
- Reporting paediatric spirometry
- Spirometry update
- Spirometry performing and reporting
- Spirometry update
- Spirometry: performing only
- Advancing spirometry update

Contents

Supporting Staff

- Root cause analysis
- Teaching and training skills
- Clinical Supervision – Training for Supervisors
- Personal and Professional Practice for Patient Safety

Supervision

- Resilience Based Clinical Supervision

Urgent and on the day

- Urgent and on the day

Weight Management

- Obesity Medicine: Weight Management, GLP-1s and Beyond

Women's Health

- Cervical Cytology Update for Primary Care Professionals (RCN accredited)
- Contraception and sexual health in primary care
- Contraception update
- Gynaecology for nurses and AHPs
- Heavy menstrual bleeding
- Introduction to contraception for healthcare professionals
- Introduction to menopause
- LARC & IUC removal training
- Menopause foundation
- Menopause masterclass
- Menopause update
- Pelvic Organ Prolapse and Ring Pessary Management
- Women's Health

Wound Care

- Introduction to doppler assessment
- Introduction to wound care
- Wound care update day
- Wound management for nurses and AHPs
- Management of venous leg ulcers
- Principles of leg ulcer management
- Principles of wound care

Free CPD Resources

Summary of Acronyms

Meet The Team

Please contact the Primary Care School team if you have a query about any aspect of the courses listed within this brochure. Queries can be directed to our team inbox: england.primarycareschooltvw.se@nhs.net

Team member	Role	Programmes
Dr Mary-Rose Shears	Primary Care Dean	Thames Valley and Wessex
Sue Clarke	Head of School of Primary Care (Training Hubs)	Thames Valley and Wessex
Marie-Clare Wadley	Primary Care Workforce Development Lead	Thames Valley
Abbie Canton	Primary Care Learning Environment Lead	Thames Valley
Victoria Pearson	Primary Care Learning Environment Lead	Thames Valley
Sarah Redhead	Primary Care Learning Environment Lead	Thames Valley
Ola Adekunle	Primary Care Business Administration Officer	Thames Valley and Wessex
Mary Curtis	Primary Care Programme Support Manager	Thames Valley and Wessex
Stephen Ingram	Primary Care Business Manager	Thames Valley and Wessex

Foreword

Welcome to the rich and exciting educational offers for primary care available to Allied Health Professionals, Registered Nurses and Nursing Associates working in Primary Care within Thames Valley.

Facilitating your education and training is important to Thames Valley and Wessex Training and Education, which exists to support the workforce in primary care.

Additionally, the Thames Valley and Wessex (TVW) Primary Care School supports educators and placements for learners in primary care by championing learning and quality of education. Currently over 90% of Primary Care Networks (PCN) in TVW have signed up, or are already approved, as learning environments. Through this activity, we are creating the pipeline for our future workforce.

Please take up this opportunity of CPD and learning as part of your culture of education and development within your practice or PCN.



Dr Mary-Rose Shears
Primary Care Dean, Thames Valley and Wessex
Workforce, Training and Education
NHS England – South East

What is Continuing Professional Development (CPD)

Continuing Professional Development refers to the ongoing process by which health care professionals maintain, improve and broaden their knowledge, skills and competence throughout their careers.

It is both a registered professional requirement, and a career development tool, ensuring staff can deliver safe, effective and up-to-date person-centred care, aligning with health population needs. All healthcare professionals have a responsibility to identify their CPD needs, and work with their employer to plan how those needs could be met.

CPD can include the following:

- Formal education – for example, attending accredited and non-accredited courses, conferences, webinars, online learning and training modules and carrying out research.
- Professional activity – for example, being involved with a professional body or giving a presentation at a conference
- Self-directed learning – for example, reading articles or books
- Work-based learning – for example, reflecting on experiences at work, considering feedback from service users/students, shadowing or being shadowed or being a member of a committee

Please note, mandatory training does **not** contribute to CPD training hours, unless the training relates to your area of speciality.

CPD funding is available for formal education (as described above) and equates to approximately £1,000 per learner, over a three-year period.

Who is eligible for CPD funding

We are able to support CPD funding applications from Allied Health Professionals, registered Nurses and Nursing Associates working in Primary Care within Thames Valley.

Personalised care roles, Health Care Support Workers, General Practitioners, Pharmacists and Physician Assistants are not eligible for this CPD funding and should discuss funding opportunities with their employer.

[Frequently Asked Questions \(FAQs\)](#)

Please refer to our FAQ guidance for further information.

CPD opportunities and how to apply

CPD opportunities

You can view our funded CPD courses within this course catalogue. For courses that sit outside the current offer, please contact your Learning Environment Lead, within the Primary Care School, to discuss further options.

How to apply for CPD funding

For funded CPD requests, please ensure you read the corresponding information such as course description, delivery method and dates available, and correctly complete and submit the continuing professional development funding application [Microsoft Form](#) (or scan the QR code)



Do not apply directly to the course provider unless otherwise instructed. If successful in your funding application, you will receive application and enrolment details by email from the TVW Primary Care School.

Please inform the TVW Primary Care School if you are unable to attend your funded course - DNA without informing us will be recorded and relayed to your practice/line manager.

Bloods



[Managing Blood Results in Primary Care](#)

Our one-day online course covering key topics for managing blood test results in primary care. Ordering and filing blood tests is bread and butter primary care. But are we always as intentional as we could be when ticking the boxes on the request form?...and when results are filed, is there always a clear plan?

Dates: please see provider website

Provider: Red Whale

Delivery method: virtual

Level of Study: Intermediate

[Introduction to Phlebotomy](#)

This is a comprehensive and hands-on course designed for individuals eager to embark on or enhance their journey in the vital skill of phlebotomy. Specifically tailored for those in primary care settings, our course is uniquely accessible to a wide range of participants, from healthcare professionals to individuals with little or no prior healthcare experience, such as receptionists or care navigators seeking to expand their roles. Led by seasoned experts, including a Senior Phlebotomist with over 20 years of experience and a Senior Nurse, this engaging day-long program promises not only a thorough grounding in the theoretical aspects of phlebotomy but also provides ample opportunity for practical, hands-on learning. Participants will leave equipped with essential skills, knowledge, and a workbook to guide their continued development in their professional settings. Join us for a transformative learning experience where you'll gain invaluable skills and confidence in the art and science of phlebotomy.

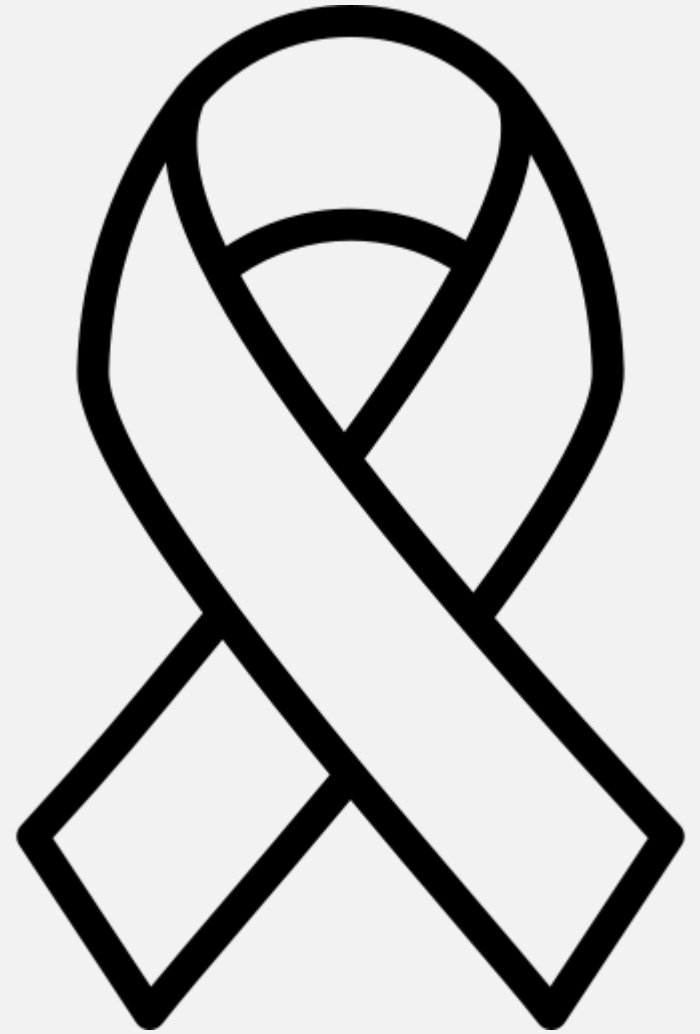
Dates: please see provider website

Provider: BBO Training

Delivery method: face to face, The Lambert Hotel, Watlington

Level of Study: Introduction

Cancer



[Cancer](#)

Our one-day online course is designed to support primary care clinicians to avoid common pitfalls, tackle health inequalities in diagnosis & screening, and personalise care for people living with and beyond cancer. What we cover

Early diagnosis with particular focus on common cancers but also some rarer and more difficult to diagnose ones

Spotting cancers in blood tests

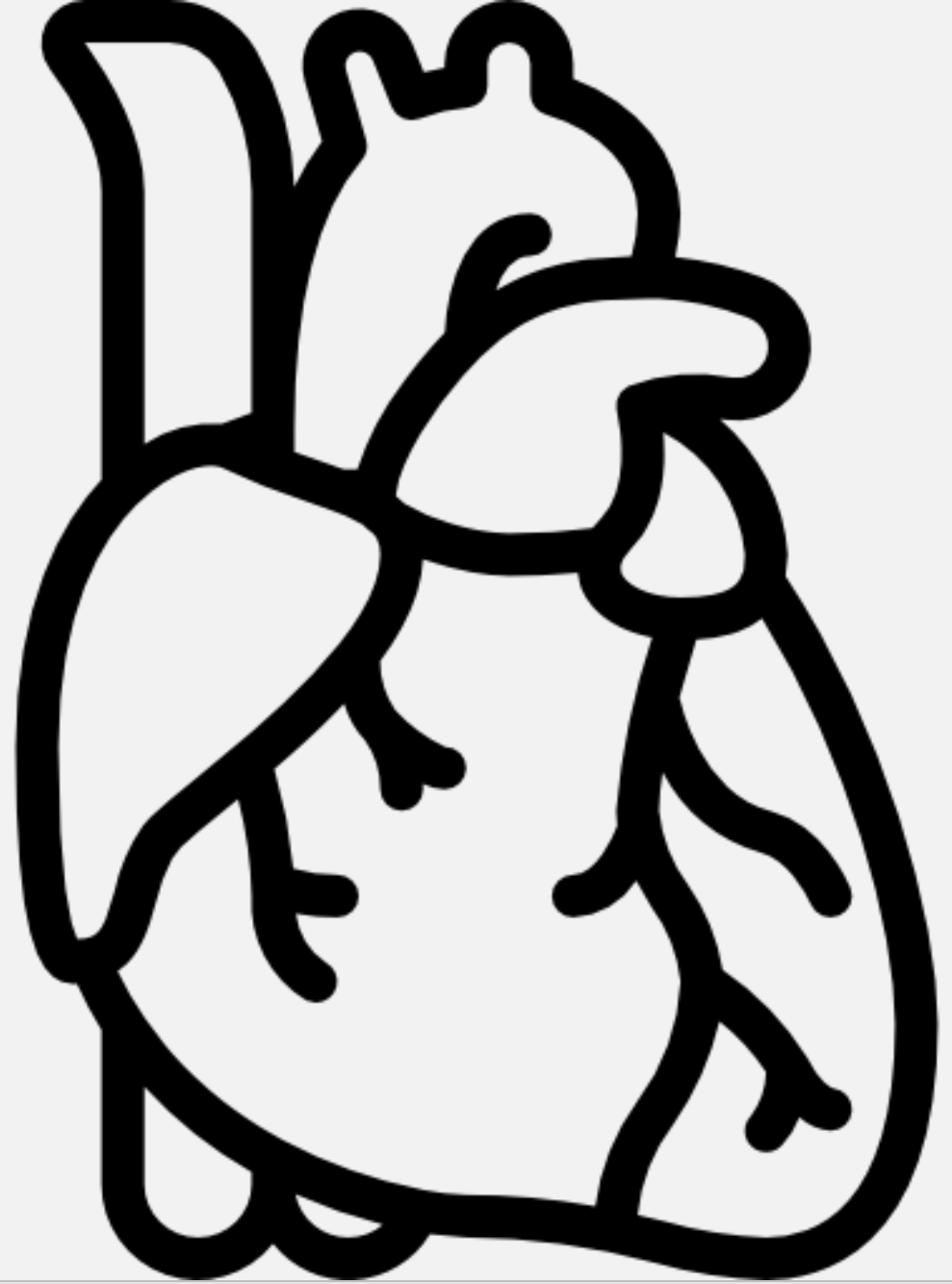
Dates: please see provider website

Provider: Red Whale

Delivery method: virtual

Level of Study: Advanced

Cardiac



[Introduction to Cardiovascular Disease](#)

These training days are designed to provide a holistic approach to cardiovascular diseases, encompassing Coronary Heart Disease (CHD), Stroke, Heart Failure, and Hypertension. Participants will gain the knowledge and skills necessary to perform annual reviews for patients with these conditions.

Dates: please see provider website

Provider: BBO Training

Delivery method: virtual

Level of Study: Introduction

[Arrhythmia Interpretation and Management](#)

This one-day course provides an opportunity to learn about various heart rhythm disturbances, their aetiology, management and treatment strategies. Delegates must have a good working knowledge of ECG interpretation.

Dates: please see provider website

Provider: M&K Update Ltd

Delivery method: virtual

Level of Study: Intermediate

Managing Heart Failure

This two-day course explains heart function and basic pathophysiology of heart failure.

This knowledge is then related to the diagnosis of heart failure, and overall management of patients with heart failure.

Device therapy is briefly discussed at the end of the day to increase awareness of treatment options, and palliative care is also briefly explored in order to encourage clinicians to provide patients with opportunities to have early end of life discussions and improve palliative care in heart failure.

Dates: please see provider website

Provider: M&K Update Ltd

Delivery method: virtual

Level of Study: Advanced

ECG Workshop

This two-day ECG Workshop addresses the needs of nurses, doctors and allied health professionals who encounter ECG monitoring and traces. Theoretical and practical workshops in ECG Interpretation are delivered by experienced cardiac professionals.

Dates: please see provider website

Provider: M&K Update Ltd

Delivery method: virtual

Level of Study: Intermediate

[Atrial Fibrillation](#)

This course is suitable for any healthcare professional who is involved in the diagnosis and management of atrial fibrillation. The course covers epidemiology, pathophysiology, risk factors and diagnosis. It will also cover the management of symptoms, along with the importance of stroke risk reduction in people diagnosed with atrial fibrillation, through appropriate use of anticoagulation.

7.5 hours course with 1 month to complete.

Dates: please see provider website

Provider: Rotherham Respiratory

Delivery method: virtual

Level of Study: Intermediate

[Heart Failure Update](#)

This update course is aimed at healthcare professionals with a working knowledge of the management of heart failure who wish to refresh their knowledge and skills. It is based on the latest available evidence and ensures the student is informed of current best practice and recent advances. You will be led through a series of topics to give you the opportunity to review and develop your current knowledge and skills. These will include ensuring an accurate diagnosis through to the rationale for the complex pharmacological and non-pharmacological management options.

7.5 hours course with 1 month to complete

Dates: please see provider website

Provider: Rotherham Respiratory

Delivery method: virtual

Level of Study: Update

[Hypertension](#)

This course is suitable for any healthcare professional who participates in the screening, diagnosis and clinical management of hypertension. Often called the “silent killer” hypertension is one of the most important modifiable risk factors for stroke, ischaemic heart disease, heart failure and renal disease. However, according to the World Health Organisation, with early identification, it is one of the most preventable and treatable causes of premature death worldwide.

7.5 hours course with 1 month to complete.

Dates: please see provider website

Provider: Rotherham Respiratory

Delivery method: virtual

Level of Study: Intermediate

[Heart Failure Foundation](#)

This course is aimed at providing easily accessible, up to date, information on the key issues in heart failure. You will be led through a series of topics that form the foundation of heart failure management, ranging from how to ensure an accurate diagnosis through to tips on self-management and the use of the most appropriate medication regimes. A carefully designed programme of presentations and guided activities will enhance your learning experience supported with opportunities to assess your progress with the use of the ‘knowledge check’ activities at the end of each section."

15 hours course with 2 months to complete

Dates: please see provider website

Provider: Rotherham Respiratory

Delivery method: virtual

Level of Study: Foundation

[Advancing Coronary Heart Disease \(CHD\) Care](#)

This course is suitable for anyone who would like to develop their knowledge and understanding of the diagnosis and management of coronary heart disease (CHD). It covers risk factors, assessment, and acute and long-term management of CHD, including blood pressure and lipid management, through lifestyle and pharmacological interventions. The course is built around case studies which help you to put theory into practice.

45 hours course with 4 months to complete

Dates: please see provider website

Provider: Rotherham Respiratory

Delivery method: virtual

Level of Study: Advanced

[Advancing Heart Failure Care](#)

This course is aimed at providing easily accessible, up to date, information on the key issues in heart failure. You will be led through a series of topics that form the essentials of heart failure management and consider aspects of the provision of care in a variety of health settings. The topics are aligned to the recently published heart failure nurse competencies (January 2021) ranging from how to investigate suspected heart failure through to the role of the multi-disciplinary team in facilitating self-care. Learning will be enhanced through a series of case studies that focus on application to practice and consideration of co-morbidities.

45 hours course with 4 months to complete

Dates: please see provider website

Provider: Rotherham Respiratory

Delivery method: virtual

Level of Study: Advanced

[Cardiac Disease: Prevention and Management for Non-specialists](#)

You don't need to be a specialist in cardiac care to attend this course but have a desire to learn more about cardiac disease and its management. Unlike the traditional Cardiac Care module there is no requirement to fulfil a book of clinical competencies. If you're looking to enhance your professional development, but don't require credits to put towards a qualification, then you can choose to study this course without credits attached and don't need to complete the final assessment. If you choose this route, you'll receive a certificate of Continuing Professional Development hours which will be valuable for NMC revalidation purposes.

Dates: please see provider website

Provider: Buckinghamshire New University

Delivery method: face to face, Uxbridge Campus

Level of Study: 10 credits, Level 6 or 7

[Coronary Heart Disease for Primary Care Course \(online\) – Rotherham Respiratory LTD](#)

This course is suitable for any health care professional working in primary care in the field of coronary heart disease (CHD). It offers an opportunity to review current evidence-based practice and apply this to case studies and real-world practice.

7.5 hours course with 1 month to complete

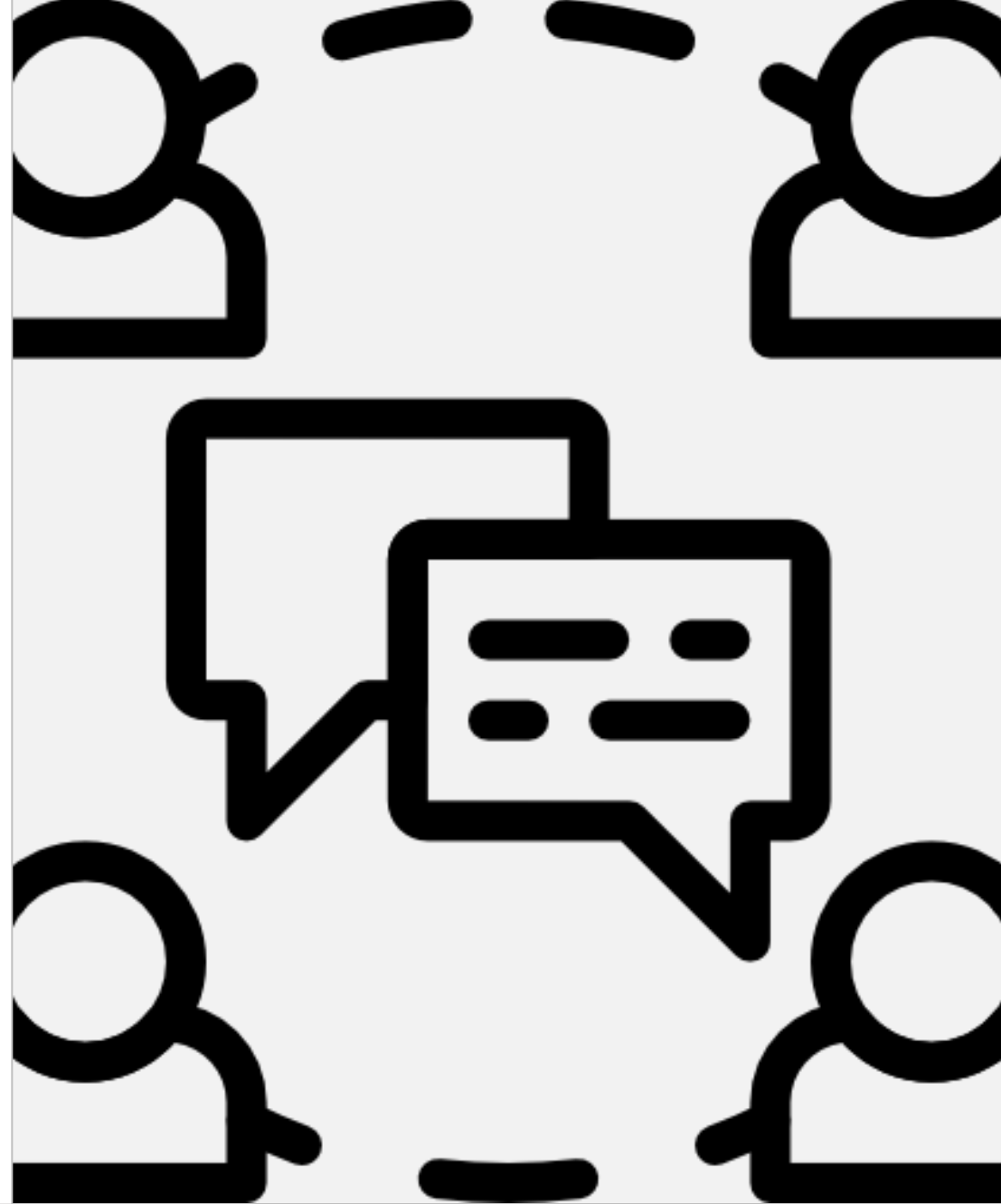
Dates: please see provider website

Provider: Rotherham Respiratory

Delivery method: virtual

Level of Study: Foundation

Communication



[Advanced Communication and Supportive Relationships](#)

This single module explores verbal and non-verbal communication, and the development of supportive relationships, within the context of health and social care. It aims to build on existing skills and develop them within the student's area of practice. The module promotes a critical approach to sources of knowledge from nursing, health and social care and psychotherapy.

Dates: please see provider website

Provider: Oxford Brookes University

Delivery method: virtual

Level of Study: 7-20 credits

[Remote Consultation and Triage for Nurses and AHPs](#)

This two-day course will take the participant through the stages of development and practice. Training consists of both theoretical and practical components and will provide the skills required to set up and run a telephone triage system.

Dates: please see provider website

Provider: M&K Update Ltd

Delivery method: virtual

Level of Study: Intermediate

Dementia



[Dementia Management](#)

This course will cover a range of areas relating to dementia care such as:

- assessment and interventions for patients who have an altered physical status
- altered psychological status and altered social status secondary to dementia
- the concept of patient-centred care in dementia and an understanding of the patient journey to ensure specific needs such as care planning and communication are met
- the roles of relatives, friends, and the extended healthcare team in supporting a patient with dementia

Dates: please see provider website

Provider: Buckinghamshire New University

Delivery method: virtual

Level of Study: 20 credits, Level 6 or 7

Dermatology



[Dermatology Update](#)

This course is relevant for Primary Care staff who wish to update knowledge on dermatology care, including evidence-based practice and guidance.

Dates: please see provider website

Provider: BBO Training

Delivery method: virtual

Level of Study: Update

[Fundamentals of Dermatology for Primary Care](#)

The aim of this course is to equip primary care healthcare professionals with evidence-based knowledge and practical confidence to elevate dermatology care, improve patient support for common skin conditions, and ensure appropriate secondary care referral.

Dates: please see provider website

Provider: BBO Training

Delivery method: virtual

Level of Study: Introduction

[Getting to Grips with Dermoscopy \(TBC\)](#)

Elevate your diagnostic skills in skin lesion assessment with "Getting to Grips with Dermoscopy", a comprehensive training program designed for experienced healthcare professionals. Led by expert instructors, this session is tailored for General Practitioners, Advanced Nurse Practitioners, Paramedics, Nurses, and other registered healthcare professionals. Bring your own dermatoscope to the session as we delve into the nuances of dermoscopy, from interpreting dermoscopic structures to recognizing common skin lesions and lesions of concern. Join us for an interactive learning experience that will sharpen your dermatological proficiency and enhance patient care outcomes

Dates: please see provider website

Provider: BBO Training

Delivery method: virtual

Level of Study: Introduction

[Dermatology for Nurses and AHPs](#)

This one-day course designed to give a broader understanding of anatomy and physiology of the skin and giving ability in recognising lesions, lumps and bumps.

Dates: please see provider website

Provider: M&K Updates Ltd

Delivery method: virtual

Level of Study: Intermediate

[Spots Rashes and Skin Eruptions Seen in Primary Care](#)

This is a two-day online course. For all practitioners who dread the patient with a rash!! These study days aim to increase knowledge, confidence and competence in consulting patients with skin issues and illness.

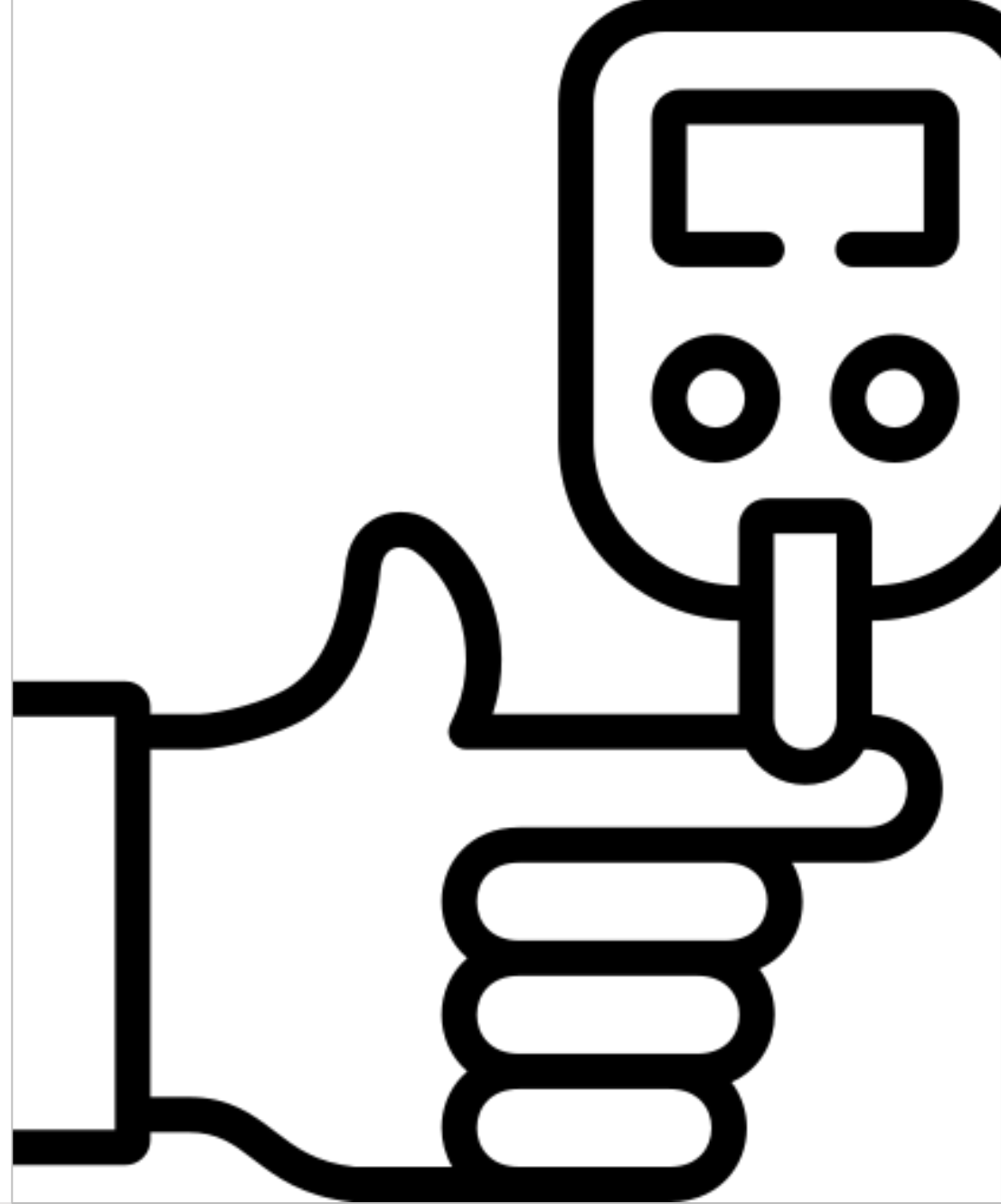
Dates: please see provider website

Provider: Aspire Clinical Training

Delivery method: virtual

Level of Study: Intermediate

Diabetes



[Diabetes Update Day](#)

This update course covers the latest trends in diabetes management, encompassing a thorough understanding of cutting-edge pharmacological interventions utilised in diabetes care.

Dates: please see provider website

Provider: BBO Training

Delivery method: virtual

Level of Study: Update

[Introduction to Diabetes](#)

This two-day training is designed for Primary Care staff who are new to the field of diabetes care. If you've recently started seeing patients with diabetes, or are planning to, this course is tailored to provide you with the fundamental knowledge and skills required to confidently care for individuals with diabetes. The primary focus is on adults with Type 2 diabetes, although key recommendations and signposting for patients with Type 1 diabetes will also be covered.

Dates: please see provider website

Provider: BBO Training

Delivery method: virtual

Level of Study: Introduction

[Diabetes Course for Nurses and AHPs](#)

This one-day course aimed at Nurses and AHPs working in General Practice to develop competency in managing patients with diabetes based around the TREND nursing competency framework

Dates: please see provider website

Provider: M&K Updates Ltd

Delivery method: virtual

Level of Study: Intermediate

[Diabetes Update](#)

This course is designed for clinicians with an existing knowledge of the diagnosis and management of type 2 diabetes. Type 2 diabetes is a condition where complications, including chronic kidney disease and cardiovascular complications, can cause significant morbidity and mortality. The focus of the course is on recognising how appropriate, evidence-based interventions can both prevent complications and reduce the impact of any existing complications on quality of life and the use of healthcare resources.

7.5 hours course with 1 month to complete

Dates: please see provider website

Provider: Rotherham Respiratory

Delivery method: virtual

Level of Study: Update

[Advancing Diabetes Care](#)

This course is suitable for anyone who would like to advance their knowledge and understanding of the diagnosis and holistic management of diabetes. It covers different types of diabetes, explains the pharmacological and lifestyle interventions that can optimise outcomes with reference to glycaemic control, blood pressure and lipid management and includes case studies to bring the theory to life. Sections include mental health and special cases such as learning disabilities and the frail elderly.

45 hours course with 4 months to complete

Dates: please see provider website

Provider: Rotherham Respiratory

Delivery method: virtual

Level of Study: Advanced

[Diabetes Care](#)

On successful completion of this module, you will be able to:

- demonstrate a critical understanding of the epidemiology, aetiology and pathology of Type 1 and Type 2 diabetes and the impact on the health of the individual.
- critically analyse the therapeutic management of Type 1 and Type 2 Diabetes: Blood Glucose Monitoring, Oral and Insulin therapies.
- critically examine the role of the inter-professional team in the management and care of clients with diabetes in the hospital and community setting.
- critically review the evidence-base for diabetes care and decision making in inter-professional practice.
- critically analyse government strategies for diabetes and examine their benefits for practice within an inter-professional context.
- critically evaluate the physical, psycho-social and cultural impact of diabetes on the client and family.

Dates: please see provider website

Provider: Buckinghamshire New University

Delivery method: face to face, Uxbridge Campus

Level of Study: 20 credits, Level 6 or 7

[Foundation Course in Diabetes Care and Management](#)

This course is for healthcare professionals who would like to increase knowledge, skills and confidence to provide safe diabetes care. This course provides a “basics up” approach to the complexities of diabetes and will inspire learners to enjoy providing diabetes care. The course has been designed by an experienced practicing clinician who has a passion for improving the lives of those living with diabetes.

15 hours course with 2 months to complete

Dates: please see provider website

Provider: Rotherham Respiratory

Delivery method: virtual

Level of Study: Foundation

[Type 2 Diabetes Demystified](#)

Our half-day online course covering the essentials that will make a difference to the care of people with Type 2 diabetes and boost our confidence in supporting them. Everything from assessing and managing risk; diagnosis, management and high impact lifestyle support; spotting emergencies and choosing drugs.

What we cover

- Screening for and preventing diabetes
- Prediabetes
- How to give high impact lifestyle advice and encourage self-management
- Nutrition and weight management
- Motivating behaviour change
- Macrovascular and microvascular complications
- Demystifying the baffling array of diabetes drugs; what first...and what next?
- Priorities of care; balancing lipids, blood pressure, renal function and HbA1c.

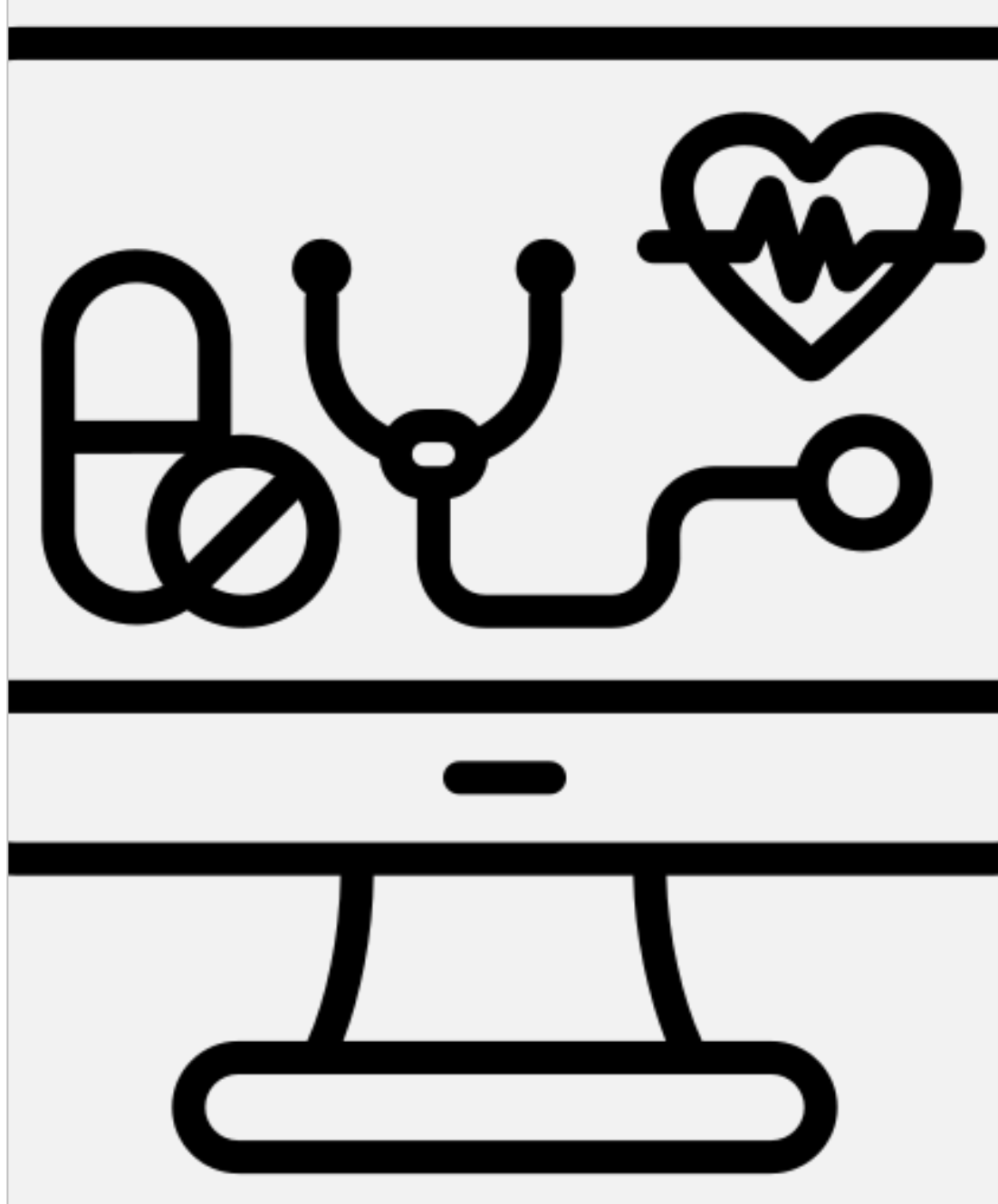
Dates: please see provider website

Provider: Red Whale

Delivery method: virtual

Level of Study: Intermediate

Digital Health



[Digital Skills for Digital Health](#)

For professionals interested in learning more about how they can play a part of the digital transformation in healthcare, this course explores the use of technology to improve patient care and population wellbeing and the shift from analogue to digital.

Dates: please see provider website

Provider: University of Winchester

Delivery method: blended

Level of Study: Level 7

End of Life Care



[Care at the End of Life](#)

This single practice-focused module explores death and dying from a professional practice perspective. This includes discussion of the principles of palliative care and notions of a 'good death'. You will evaluate ethical, legal and professional frameworks, and policy and service provision, and their applications across different cultural and practice settings. You will develop a critical awareness of the dying process and symptom management, communication and assessment, viewed within their cultural context. In the process, You will develop greater self-awareness of your attitudes to death, dying and loss, and how these impact on the dying person and their families.

Dates: please see provider website

Provider: Oxford Brookes University

Delivery method: virtual

Level of Study: 7-20 credits

[End of Life Care and Symptom Management](#)

This course is suitable for qualified healthcare professionals who wish to develop their knowledge, understanding and skillset in caring for patients at the end of their lives, across all care settings. It is designed to deliver up-to-date theory and to allow discussion of advancements in practice including new interventions and technological developments. The taught content will be linked to your experiences allowing critical discussion of practice with other students on the course.

Dates: please see provider website

Provider: Buckinghamshire New University

Delivery method: face to face, Uxbridge Campus

Level of Study: 20 credits, Level 6 or 7

[Grief, Loss and Bereavement](#)

A one-day programme of study designed for Registered Nurses, Doctors, and Allied Health Professionals working in a variety of care settings, whose role may include supporting and advising patients who are end of life. This course provides the essential knowledge and information to prepare staff with confidence in how to manage loss and grief, for their patients and significant others. Bereavement and loss are frequently unaddressed topics within health care.

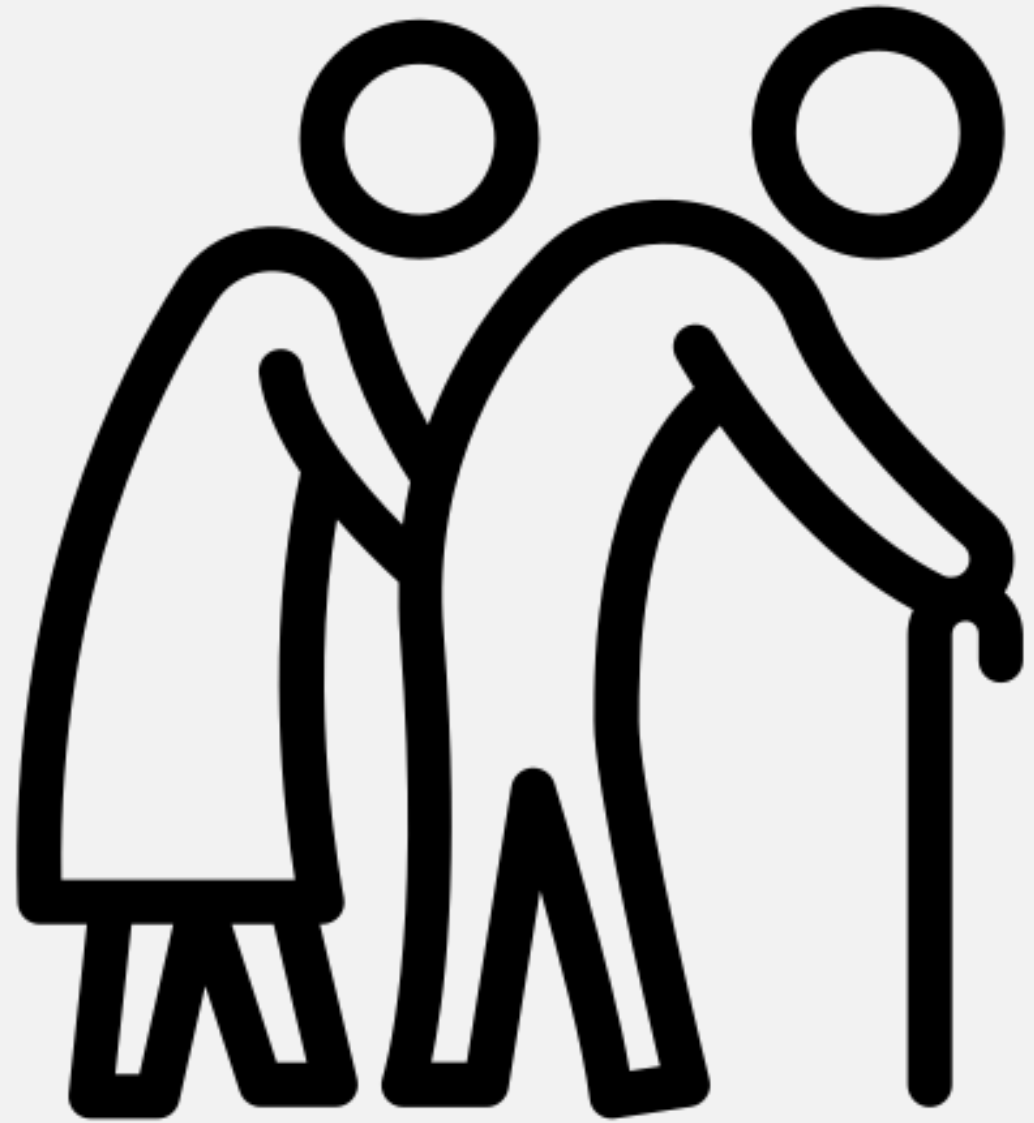
Dates: please see provider website

Provider: M&K Updates Ltd

Delivery method: virtual

Level of Study: Intermediate

Frailty



[Frailty - Assessment, Risk Reduction and Management](#)

This one-day course examines the factors that increase the risk of frailty and what the nurse, AHPs, as part of the multidisciplinary team can do to reduce risks and improve quality of life.

Dates: please see provider website

Provider: M&K Updates Ltd

Delivery method: virtual

Level of Study: Intermediate

[Frailty Care](#)

This course will support you to develop an understanding of the appropriate assessment and management strategies for the clinical care of a person with frailty. Current and relevant government and clinical guidelines will also be explored. You'll gain insight into the experiences of the frail older person and have the chance to reflect on prevention, assessment and to build strategies for frailty. You'll also explore issues relating to the management and development of healthcare services to enhance support for the person with frailty.

Dates: please see provider website

Provider: Buckinghamshire New University

Delivery method: face to face, Uxbridge Campus

Level of Study: 20 credits, Level 6 or 7

[Community Rehabilitation: Healthy Ageing](#)

For professionals supporting older adults in community or hospital settings, this course explores strategies to promote healthy ageing. The module introduces rehabilitation theories and interventions that support ageing populations.

Learners will develop critical thinking and self-managed clinical practice skills, with relevance to frailty services, urgent response teams, and reablement.

Dates: please see provider website

Provider: University of Winchester

Delivery method: blended

Level of Study: Level 7

[Interventions for frailty and falls](#)

Ideal for clinicians working with older adults, this course focuses on evidence-based strategies to reduce frailty and prevent falls.

Learners will analyse epidemiological data, review policy frameworks, and evaluate interventions such as exercise, nutrition, and social engagement.

Dates: please see provider website

Provider: University of Winchester

Delivery method: blended

Level of Study: Level 7

GP Nurse Update



[GP Nurse Update](#)

Our one-day online GP Nurse Update course is the essential update for primary care nurses, covering the most recent and relevant changes to guidelines and evidence. What we cover

Pharmacological obesity management: understand the new drugs used in weight management

Asthma: we cover the joint NICE, SIGN and BTS guideline

Falls: applying the NEW NICE guidance on falls: assessment and prevention

Cervical cancer screening and HPV testing: what we need to know following the National Screening Committee update

Erectile dysfunction: when to ask, and what to do

HIV: prevalence is increasing, we consider how primary care can make a difference

And lots more key topics for primary care!

Dates: please see provider website

Provider: Red Whale

Delivery method: virtual

Level of Study: Intermediate

**Health & Wellbeing
Promotion**



[Advanced Health Promotion](#)

In this module you will be introduced to behavioural theory as it relates to changes in health behaviour and lifestyle, as well as looking at the larger social dimensions related to lifestyle. You will be introduced to behavioural theory as it relates to changes in health behaviour and lifestyle, as well as looking at the larger social dimensions related to lifestyle. The module will also provide tools for: planning health promotion activities, considering the advantages and disadvantages of engaging communities in developing their own healthy lifestyles.

Dates: please see provider website

Provider: Oxford Brookes University

Delivery method: blended

Level of Study: 7-20 credits

[Wild Monday – Work Well Programme and Webinars](#)

Open to ALL staff working in Primary Care in BOB.

The Work Well Programme is a practical system of resources on topics that are relevant to frontline healthcare staff.

The package includes:

- Access to live monthly webinars that you can view at any time
- Training and support masterclasses for wellbeing leads
- Access to the Wellbeing QI Toolkit to support your practice to audit and improve wellbeing support
- Access to five-minute booster videos with simple, actionable steps to boost you, and your team's day-to-day wellbeing, even in times of stress

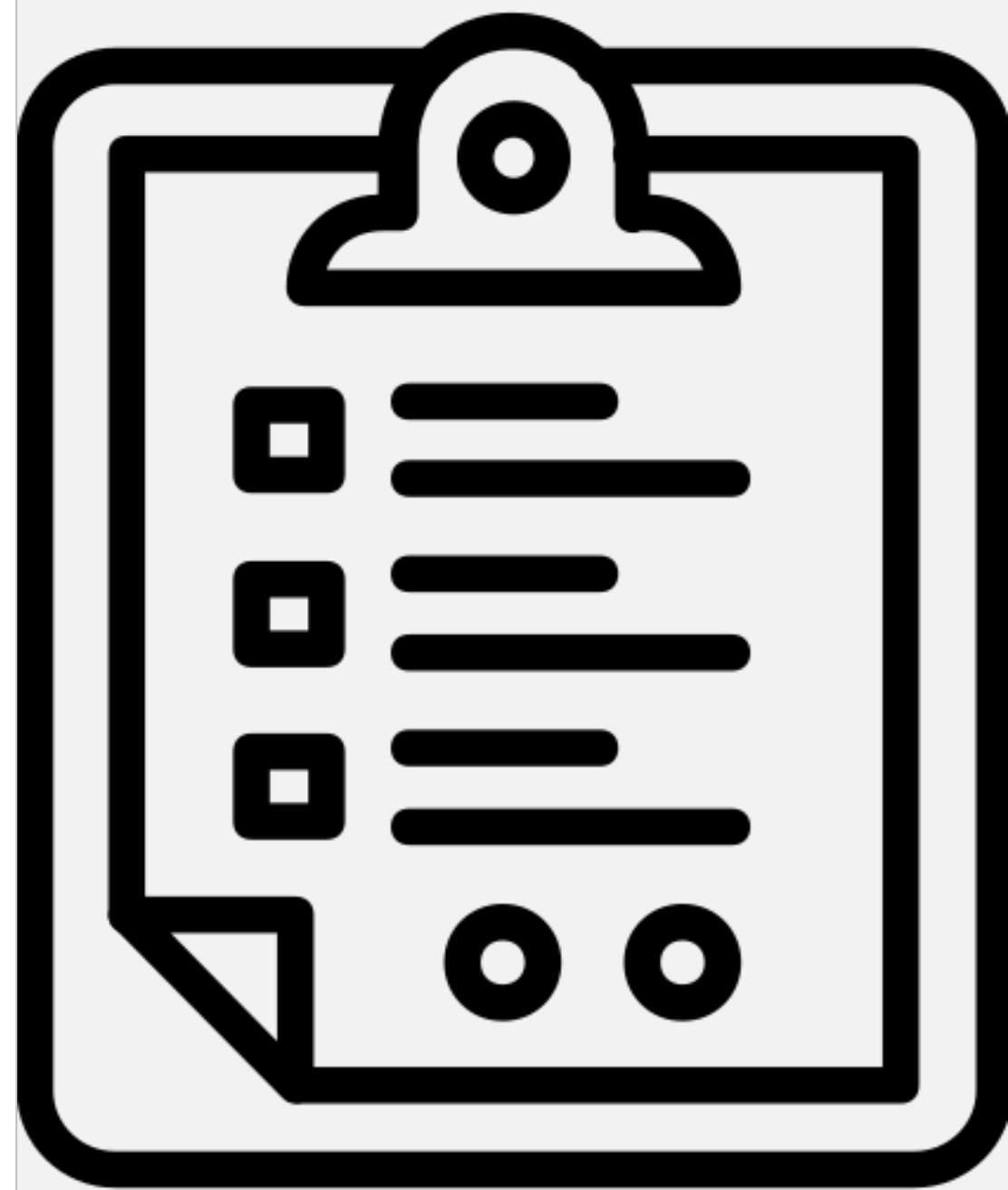
Dates: please see provider website

Provider: Wild Monday (You Are Not a Frog)

Delivery method: virtual

Level of Study: N/A

History Taking & Assessment



[Advanced History Taking and Assessment](#)

This single, practice-focused module provides students with the opportunity to develop critical thinking by enhancing their knowledge and skills in taking a comprehensive patient history and performing a thorough physical and psychosocial assessment. Students are expected to demonstrate analysis and evaluation through their assessment skills, and ability to accurately communicate a patient / client health history and examination findings using appropriate terminology, reporting deviations from normal in a succinct manner to colleagues within the multidisciplinary team. Students must have support from their clinical manager to undertake this module because there is an expectation that students will be supervised in their practice area.

Dates: please see provider website

Provider: Oxford Brookes University

Delivery method: face to face, Oxford/Swindon

Level of Study: Level 7

[Assessment of the Child in Primary Care](#)

The two-day programme will cover common presentations, why children are different and the process of exclusion in making diagnosis as children often present with non-specific symptoms with both serious and non-serious illness. For nurses, doctors and allied professionals working in a primary care setting who need to develop and enhance their head-to-toe assessment skills of a presenting child (not neonates).

Dates: please see provider website

Provider: M&K Updates Ltd

Delivery method: virtual

Level of Study: Intermediate

[Comprehensive Assessment of the Older Person](#)

This two-day course is aimed at nurses and allied health professionals it will enable the attendee to understand, recognise and use appropriate assessments as part of a systematic approach to improve the quality of assessment and outcomes of care for older people in acute or intermediate care settings.

Dates: please see provider website

Provider: M&K Updates Ltd

Delivery method: virtual

Level of Study: Advanced

[History taking and assessment](#)

Designed for practising health and care professionals developing advanced assessment skills, this course covers physical and mental health evaluations.

L earners will develop the knowledge and clinical skills required to systematically take a patient history, perform physical examinations and interpret diagnostic data. This will facilitate their ability to assess and manage patients with undifferentiated and undiagnosed conditions.

Dates: please see provider website

Provider: University of Winchester

Delivery method: face-to-face, Winchester

Level of Study: Level 7

[Decision making for healthcare settings](#)

Designed for health and care professionals, this course enhances decision-making in complex clinical environments.

Learners will critically examine decision-making theories, risk management, and ethical frameworks. Topics include pattern recognition, uncertainty, and legal considerations. The course supports reflective practice and sound clinical judgement and enables learners to develop their decision-making skills and evaluate their own processes when dealing with rapidly changing situations, uncertainty, and risk.

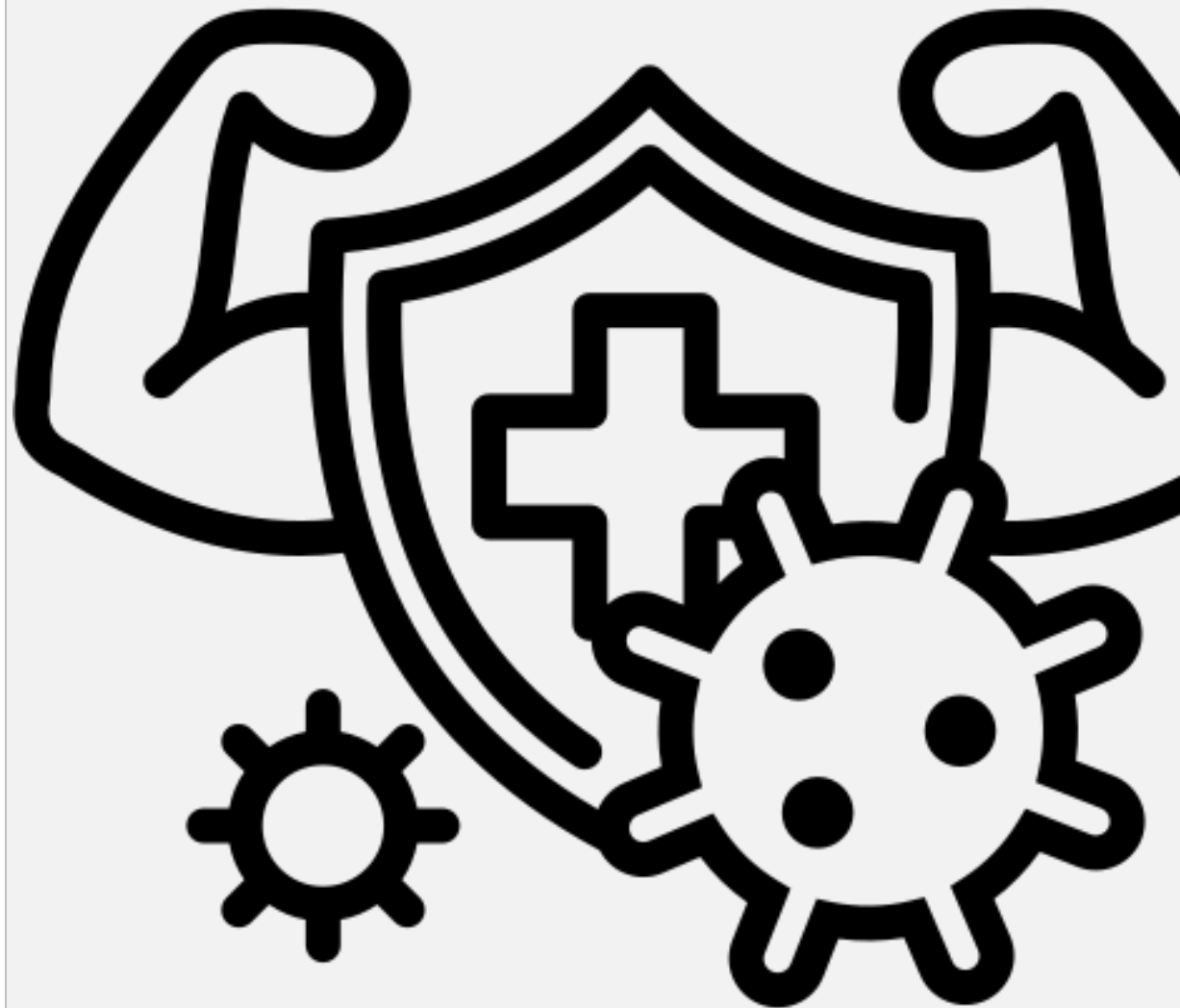
Dates: please see provider website

Provider: University of Winchester

Delivery method: hybrid

Level of Study: Level 7

Immunisation & Travel Health



[Introduction to Immunisations for the Registered Professions](#)

Designed specifically for Registered Nurses and Allied Health Professionals new to immunisation practice, this course provides essential training on the national immunisation schedules for both adults and children. The curriculum is structured around the Public Health England standards, encompassing vaccine schedules for influenza, PPV, Shingles, MMR, COVID-19, and the management of childhood immunisations, including catch-up programs as per Green Book Guidance.

Dates: please see provider website

Provider: BBO Training

Delivery method: face to face, Lambert Hotel, Oxfordshire

Level of Study: Introduction

[Immunisation Update - National cohort Immunisations \(Adult/child\)](#)

An annual update of national cohort immunisations for both adults and children, for professionals who have already completed a two-day foundation course. This session content fulfils the mandatory requirements outlined in the Public Health England (2018) National Minimum Standards and Core Curriculum for Registered Healthcare Practitioners.

Dates: please see provider website

Provider: BBO Training

Delivery method: virtual

Level of Study: Update

[Immunisation Update - Travel Health](#)

Successful completion of this half day travel vaccination update will enable participants to effectively conduct risk assessments, analyse and address unique vaccinations requirements, differentiate between NHS and private vaccine schedules, promote effective health measures and gain understanding of appropriate prophylaxis and malaria risk.

Dates: please see provider website

Provider: BBO Training

Delivery method: virtual

Level of Study: Update

[Introduction to Travel Health](#)

This is a two-day course providing HCPs with an introduction to Travel Health.

Educating participants of travel medication, risk assessment, travel risk reduction, vaccine preventable diseases, health promotion and preventative measures, vaccine schedules for safe effective travel service within Primary Care.

Dates: please see provider website

Provider: BBO Training

Delivery method: virtual

Level of Study: Introduction

[Immunisation Update](#) AWAITING FUNDED PLACES

A half-day online immunisation update training course, delivered via Microsoft Teams. This training is primarily targeted at healthcare professionals and healthcare support workers who already administer, promote and/or advise about vaccines. 3 CPD hours of participatory learning.

Dates: please see provider website

Provider: Oxford Vaccination Group

Delivery method: virtual

Level of Study: Intermediate

[Introduction to Immunisation](#) AWAITING FUNDED PLACES

A 2-day training course aimed at healthcare professionals and healthcare support workers new to the role of administering, promoting, and advising on vaccination.

Aims of course

To relate to practice and emphasise key learning points for each content area outlined within the Public Health England National Minimum Standards and core curriculum for immunisation training for registered healthcare practitioners

To address current issues and be informed about local resources and teams to support practice

To provide a platform for delegates to ask questions

Dates: please see provider website

Provider: Oxford Vaccination Group

Delivery method: face to face, Oxford Thames Hotel

Level of Study: Intermediate

[Annual OVG Immunisation Seminar](#) AWAITING FUNDED PLACES

A one-day seminar for HCPs providing key updates and the latest news on the topic of immunisations.

This popular day seminar provides an ideal opportunity for practitioners to update their current immunisation knowledge and learn the latest news on the topic of vaccination.

Our target audience consists of (but is not limited to) practice nurses, health visitors, school nurses, community nurses and general practitioners.

Dates: please see provider website

Provider: Oxford Vaccination Group

Delivery method: face to face, Leonardo Royal Oxford Hotel

Level of Study: Intermediate

[Immunisation and Influenza Update](#) AWAITING FUNDED PLACES

A short-day immunisation and influenza training course, targeted at healthcare professionals and healthcare support workers, who already administer, promote and/or advise about vaccines.

The content is:

- aligned with Public Health England National Minimum Standards and core curriculum for immunisation training for registered healthcare practitioners
- focused on both adult and paediatric national immunisation programmes and policies (not travel vaccines)
- aimed at all healthcare professionals who administer/advise about immunisation
- delivered by a range of local immunisation specialists

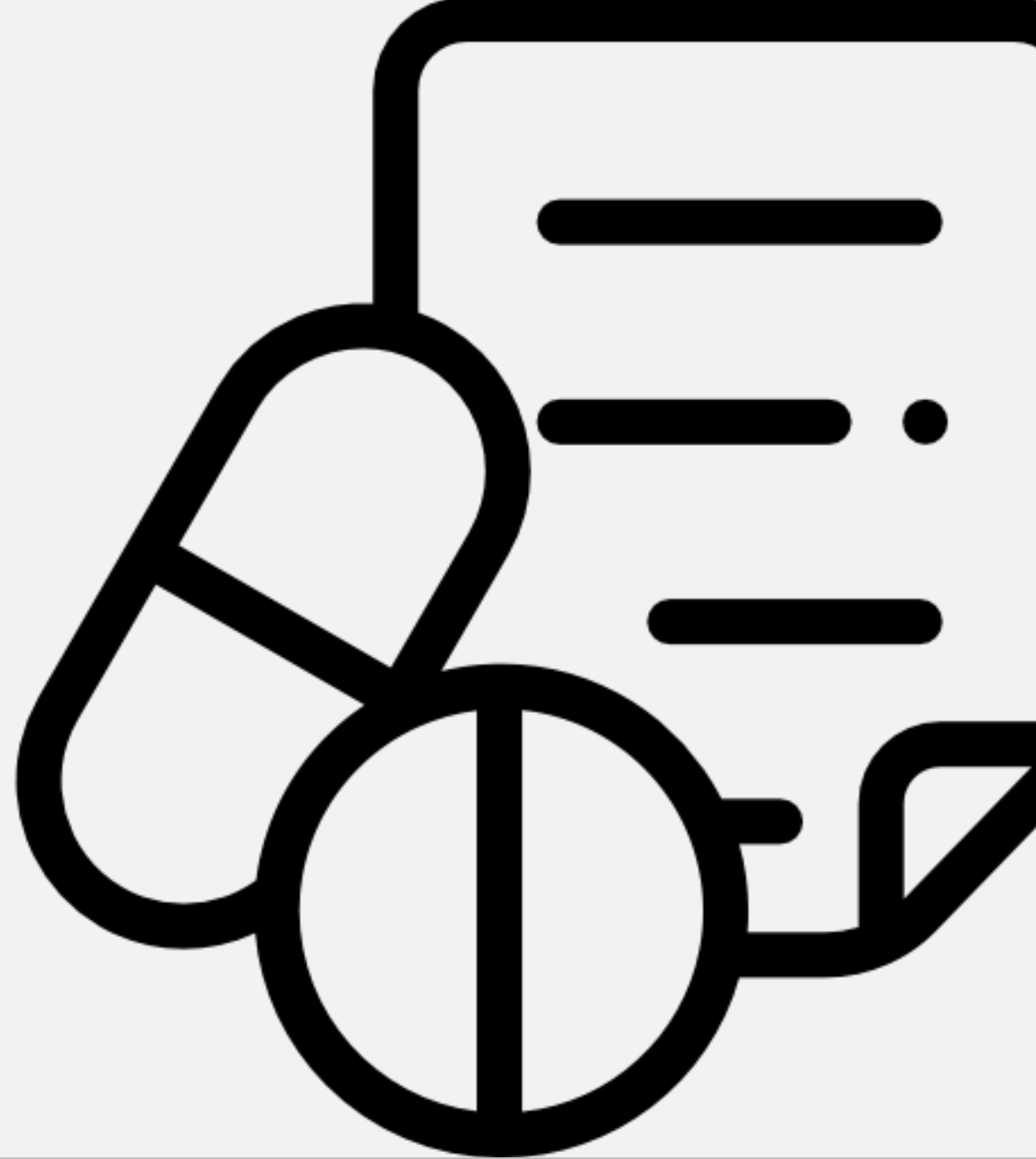
Dates: please see provider website

Provider: Oxford Vaccination Group

Delivery method: face to face, Oxford Thames Hotel

Level of Study: Intermediate

Independent Prescribing



[Non-medical Prescribing Update](#)

This informative and interactive one-day NMP Update course, designed for primary care health professionals who are seeking to enhance their prescribing skills and stay up-to-date with the latest developments in general practice. This course empowers you to provide safer and more effective care to your patients through informed and responsible prescribing practices.

Dates: please see provider website

Provider: BBO Training

Delivery method: virtual

Level of Study: Update

[Non-medical Prescribing Update Day](#)

This one-day update course is designed for all non-medical prescribers to develop and maintain safe and effective prescribing practice. You will explore contemporaneous issues and challenges relating to prescribing practice and evaluate your individual prescribing scope of competence.

Dates: please see provider website

Provider: M&K Updates Ltd

Delivery method: virtual

Level of Study: Intermediate

Non-medical Prescribing Update

This course is suitable for any prescriber who would like an update on current issues in prescribing practice. Providing outcomes of principles for safer prescribing, prescribing in children, frailty and renal impairment, prescribing for acute and long-term conditions and the medico-legal and ethical issues in healthcare.

7.5 hours course with 1 month to complete

Dates: please see provider website

Provider: Rotherham Respiratory

Delivery method: virtual

Level of Study: Update

Interpreting Blood Results



[Interpreting Blood Results](#)

A full-day course tailored for experienced Primary Care staff who seek to enhance their proficiency in 'Interpreting Blood Results within Primary Care

Dates: please see provider website

Provider: BBO Training

Delivery method: virtual

Level of Study: Introduction

[Understanding Blood Results](#)

This two-day course allows the candidate a chance to fully understand routine haematology and biochemistry results.

Dates: please see provider website

Provider: M&K Updates Ltd

Delivery method: virtual

Level of Study: Intermediate

Leadership Development



[Three Step Leadership and Management](#)

This 3-day course enables development of skills in managing yourself, your job and managing others. Focusing on key elements such as your team role, personal developmental needs, time management, confidence, effective communication skills, managing difficult working relationships, leadership styles, use of power and influence, negotiation and conflict resolution strategies and improving job performance

Dates: please see provider website

Provider: M&K Updates Ltd

Delivery method: virtual

Level of Study: Advanced

[Improving the Quality of Healthcare](#)

This course will enable healthcare professionals to critically explore the conceptual foundations of quality and governance in the context of their own working environment. You will gain an understanding of the broader theoretical concepts of quality and clinical governance initiative. It challenges accepted notions of measuring quality and performance in complex situations and explores how practitioners can develop more appropriate and effective frameworks. You will be introduced to the complexity of change management and the dilemmas in achieving organisational change through clinical governance.

Dates: please see provider website

Provider: Oxford Brookes University

Delivery method: virtual

Level of Study: 6-15 credits

[Leadership and Management in Healthcare](#)

This short course will help develop your skills in leadership and management. Many of our lecturers maintain clinical currency by working in practice to ensure you receive the most up-to-date insights and training.

Dates: please see provider website

Provider: Buckinghamshire New University

Delivery method: blended, Uxbridge Campus

Level of Study: 20 credits, Level 6 or 7

[Integrated System leadership](#)

This course is for health and social care professionals seeking to enhance their leadership practice in complex systems.

Dates: We are taking expressions of interest for this course to commission a Primary Care cohort

Provider: University of Winchester

Delivery method: blended

Level of Study: Level 7

Lifestyle Medicine



[Lifestyle Medicine](#)

Our one-day online course designed to blend the latest medical insights with practical lifestyle strategies, ensuring a holistic approach to health. Suitable for anyone working to support patients and populations with making health behaviour change.

What we cover

Why is lifestyle medicine needed?

The scale of the problem

What is a modern developed lifestyle?

Why lifestyle medicine ?

The social determinants of health

6 pillars of lifestyle medicine - Nutrition; Physical activity; Sleep; Minimizing harmful substances; Mental wellbeing and stress; Healthy relationships

Putting lifestyle medicine into practice - As an individual; As a practice; At network/cluster level

National initiatives e.g. Active practice and Parkrun practice

Group consultations

Health coaching and behaviour change

Starting a walk, jog or swim at your practice, network or cluster

Completing the Red Whale Lifestyle Medicine course and reading the associated articles will provide the additional training required to practice as a GPwERLM.

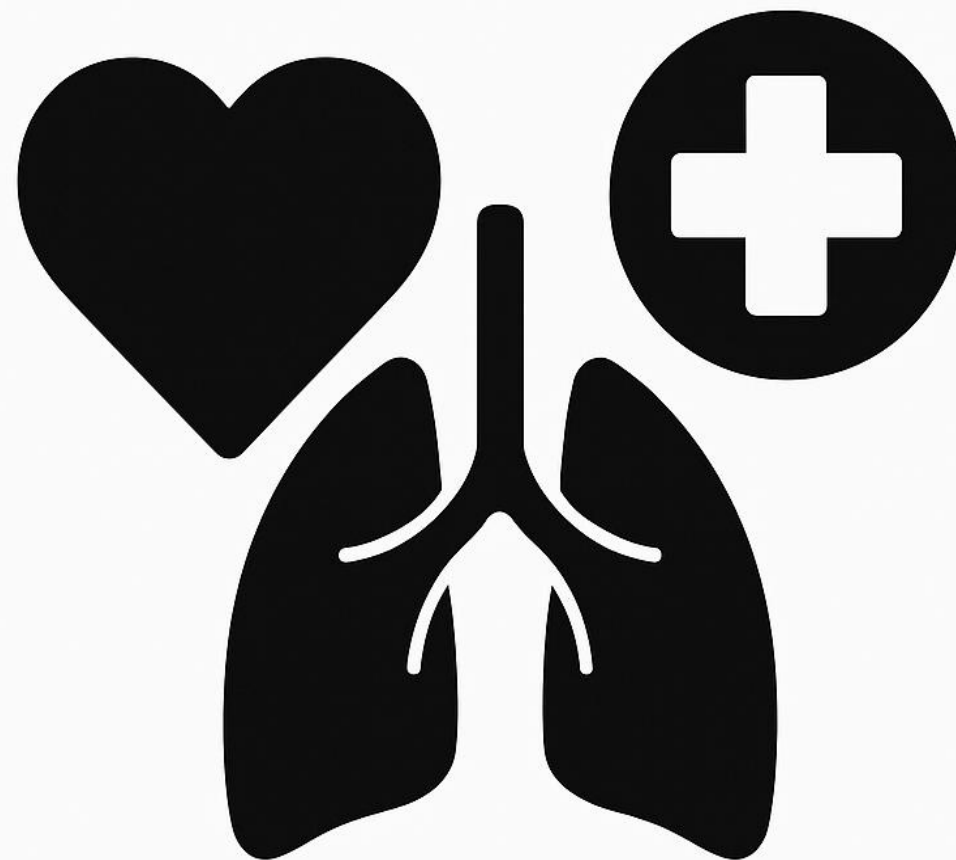
Dates: please see provider website

Provider: Red Whale

Delivery method: virtual

Level of Study: Intermediate

Long Term Conditions



[Community Rehabilitation: Long-term Conditions](#)

This course is for health and care professionals working with people living with long-term conditions, focusing on physical activity and behaviour change. This course is for health and care professionals working with people living with long-term conditions, focusing on physical activity and behaviour change.

Dates: please see provider website

Provider: University of Winchester

Delivery method: hybrid

Level of Study: Level 7

[Chronic Kidney Disease](#)

This course is suitable for anyone who would like to develop their knowledge and understanding of the diagnosis and holistic management of chronic kidney disease (CKD). It covers risk factors, diagnostic tests, and the pharmacological and lifestyle interventions that can optimise outcomes including blood pressure and lipid management. The course is built around two key case studies which help you to put theory into practice.

7.5 hours course with 1 month to complete

Dates: please see provider website

Provider: Rotherham Respiratory

Delivery method: virtual

Level of Study: Intermediate

Men's Health



Men's Health

Our full-day online course is a comprehensive and evidence-informed approach to dealing with men's health issues in primary care. Everything from cancer to erectile dysfunction, cardiovascular and much more.

What we cover

- PSA testing in asymptomatic men
- LUTS and prescribing in LUTS
- Abdominal aortic aneurysm (AAA)
- Suicide/perinatal mental health
- Acute prostatitis
- Acute scrotal pain
- Urinary tract infections in men
- Testicular cancer
- Haemospermia

Dates: please see provider website

Provider: Red Whale

Delivery method: virtual

Level of Study: Intermediate

Mental Health



[Mental Health and Learning Disability](#)

This course will support staff to enhance their knowledge and skills in mental health and learning disability care within the Primary Care setting. Day one will have an overview of mental health disorders and appropriate interventions, an introduction to performing annual review for mental health patients. Day two will define and identify a range of learning disabilities and explore their impact on individuals' lives and strategies for support. There will also be an introduction for performing annual reviews for learning disability patients.

Dates: please see provider website

Provider: BBO Training

Delivery method: virtual

Level of Study: Introduction

[Self Harm and Suicide Awareness](#)

Course participants will gain a better understanding of patients presenting with self harm and suicidal thoughts. After completion of the course, you will be able to identify risks and assist patients by providing appropriate care and support, referring them to the correct services for ongoing treatment.

This course has a multidisciplinary approach and will be attended by Nurses, Doctors, Allied Health Professionals (AHPs), Healthcare Assistants (HCAs) and anyone who comes into contact with people with Self Harm or Suicidal thoughts.

Dates: please see provider website

Provider: M&K Updates Ltd

Delivery method: virtual

Level of Study: Introduction

[Understanding Mental Health in Primary Care](#)

This two-day course is intended to give practitioners and introductory overview of several mental health conditions. It will also look at cultural aspects, history taking, and enabling people to gain a deeper understanding of a wide range of conditions.

Dates: please see provider website

Provider: M&K Updates Ltd

Delivery method: virtual

Level of Study: Introduction

[Managing Mental Health in Non-Mental Health Settings](#)

This course supports health and care professionals in recognising and responding to mental health needs in general healthcare settings.

There is a focus on decision making that underpins clinical

assessment and treatment of mental ill health. Learners will develop the knowledge and clinical skills required to identify and respond to a mental health presentation and be involved in formulating a safe, evidence based and collaborative treatment plan. Students will critically reflect on how theories of education and leadership impact on leading and managing their teams and services.

Dates: please see provider website

Provider: University of Winchester

Delivery method: hybrid

Level of Study: Level 7

[Mental Health](#)

Our one-day online Mental Health course is designed to give you a range of tools and skills you can use within a 10-minute consultation, and a structured approach to mental health appointments. What we cover

Creating new narratives for a range of mental health disorders - and how to explain these effectively in a way that helps patients to get better

Evidence-based management including therapies and drug dilemmas - everything from psychological therapy to drug-based treatments, self-care and promoting physical health

Bread and butter conditions like depression and anxiety - practical skills we can use with patients, promoting self-care, resources to share and pitfalls to avoid

Recognition and management of other common mental health conditions including PTSD, OCD, eating disorders and perinatal mental health problems

'Microskills' for improving wellbeing like behavioural activation, problem-solving and self-compassion that you can start using with patients the next day

Managing risk and complexity – assessing risk and supporting individuals with complex conditions like bipolar disorder, psychosis, and those at risk of suicide.

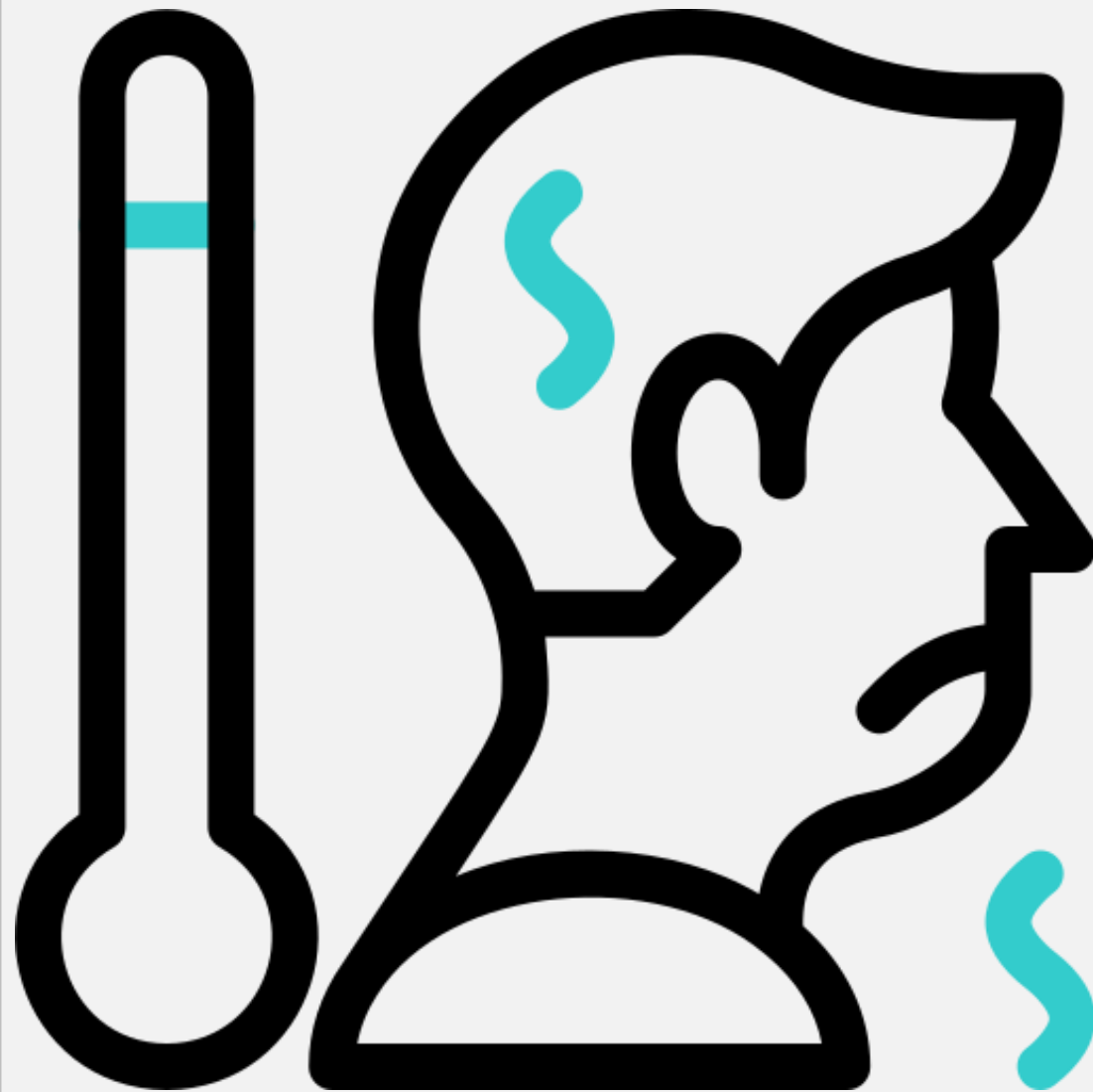
Dates: please see provider website

Provider: Red Whale

Delivery method: virtual

Level of Study: Intermediate

Minor Illness & Injury



[Paediatric Minor Illness: Assessment and Management in Primary Care](#)

This is a two-day online course. This course aims to build confidence and competence in the Management of Paediatrics in Primary Care. The course can be used as an update for those working with children in Primary Care, but also aims to encourage and support practitioners to see younger children in practice.

Dates: please see provider website

Provider: Aspire Clinical Training

Delivery method: virtual

Level of Study: Intermediate

[Clinical Management of Minor Injury and Illness](#)

This module aims to provide you with an in-depth understanding of the assessment, diagnosis, and management of minor injuries and illnesses across the lifespan. We enable you to develop advanced clinical skills in the context of primary care or urgent care settings.

Dates: please see provider website

Provider: Buckinghamshire New University

Delivery method: blended, Uxbridge Campus

Level of Study: 30 credits, Level 6 or 7

[Introduction to Minor Illness](#)

These two days are dedicated to nurses and other allied healthcare professionals who are either new to or revisiting the realm of minor illness assessment and treatment. The course progression is designed to take you from foundational knowledge to more confident and adept management of patients, encompassing both adults and children.

Dates: please see provider website

Provider: BBO Training

Delivery method: virtual

Level of Study: Introduction

[Minor Illness Update](#)

By catering to experienced registered healthcare professionals already practicing in the area of minor illness, this 'Minor Illness Update' Day equips participants to elevate their existing skills, apply the latest insights, and enhance patient care through informed, compassionate, and effective practices.

Dates: please see provider website

Provider: BBO Training

Delivery method: virtual

Level of Study: Update

[Assessment and Management of Minor Injuries in Primary Care](#)

This is a two-day online course. There are so many injuries aches, and pains that find their way onto lists in General Practice. This course can be used as an update for those already seeing injuries or as the basis to learn and understand MSK examination and management of a wide range of injuries seen in Primary Care.

Dates: please see provider website

Provider: Aspire Clinical Training

Delivery method: virtual

Level of Study: Intermediate

[Spots Rashes and Skin Eruptions seen in Primary Care](#)

This is a two day online course. For all practitioners who dread the patient with a rash!! These study days aim to increase knowledge, confidence and competence in consulting patients with skin issues and illness.

Dates: please see provider website

Provider: Aspire Clinical Training

Delivery method: virtual

Level of Study: Intermediate

[Theory and Practice of Minor Illness Management in Primary Care](#)

This 6-month course covers all areas of Minor Illness. The aim of the course is to enable a practitioner to have the skills, confidence and competence to work in a Minor Illness setting. This may be someone upskilling within Primary Care or a practitioner joining Primary Care from Secondary or Tertiary care.

Dates: please see provider website

Provider: Aspire Clinical Training

Delivery method: face to face, Mercure Lambert Hotel

Level of Study: Intermediate

Musculoskeletal Conditions



[Musculoskeletal Problems in General Practice](#)

These two days are dedicated to nurses and other allied healthcare professionals who are either new to or revisiting the realm of minor illness assessment and treatment. The course progression is designed to take you from foundational knowledge to more confident and adept management of patients, encompassing both adults and children.

Dates: please see provider website

Provider: M&K Update Ltd

Delivery method: virtual

Level of Study: Intermediate

[MSK and Chronic Pain](#)

Our one-day online MSK and Chronic Pain course is designed to give you a whole new set of skills, and revitalise your enjoyment of caring for patients with long term MSK conditions and chronic pain. What we cover

The science behind chronic pain and why all pain is felt in the brain

Skills to assess pain using a full range of biopsychosocial tools and how you can translate this assessment into supporting patients with self-care

Skills around promoting health behaviour change and patient activation

The 'bad boy' drugs opiates and gabapentinoids and how, when and whether we should be deprescribing

Peripheral, regional MSK issues involving case-based learning: shoulders, elbows, hands, hip, knee, foot and ankle problems

The MSK big three: back pain, osteoarthritis and inflammatory arthritis and ideas to take back to the practice.

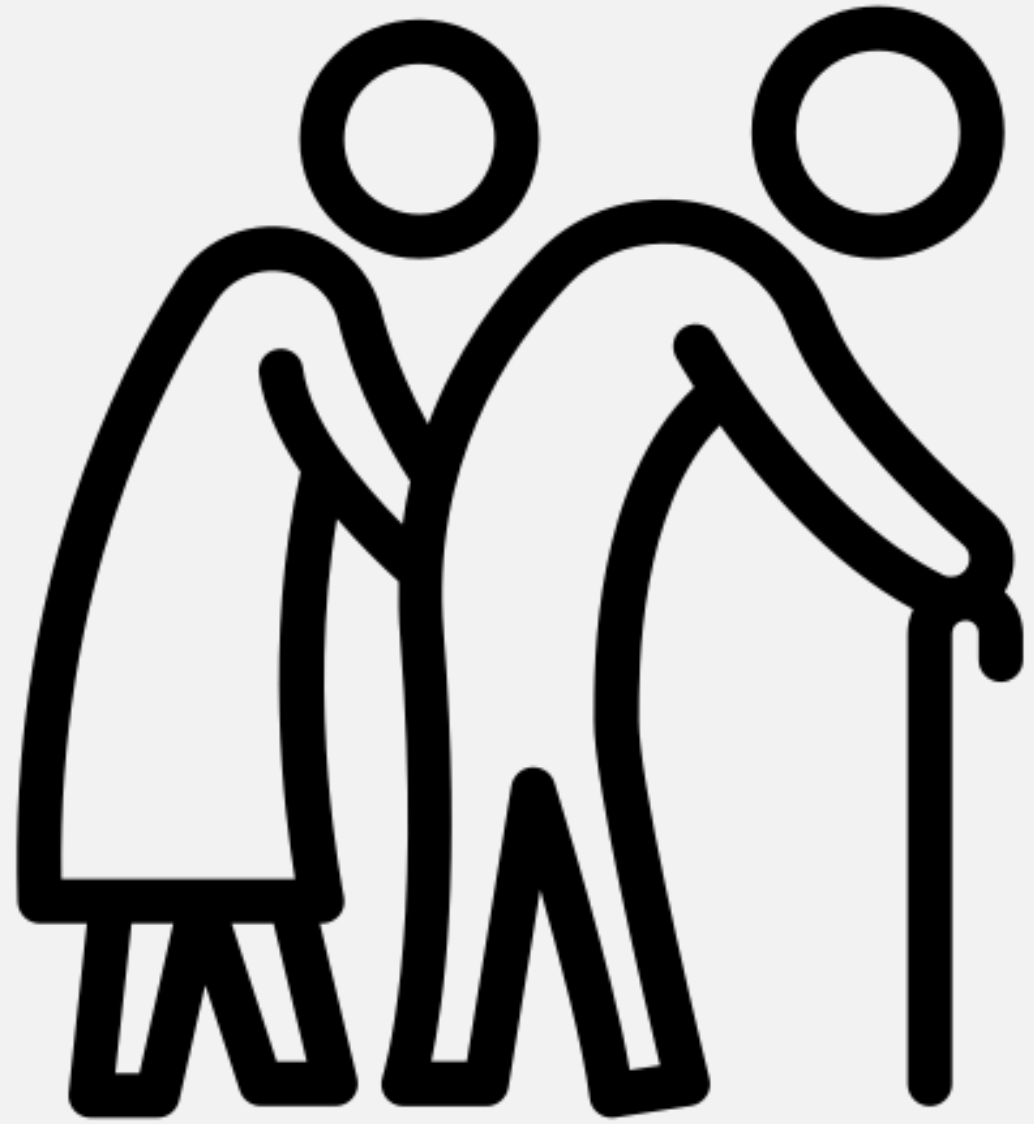
Dates: please see provider website

Provider: Red Whale

Delivery method: virtual

Level of Study: Advanced

Older People



[Older People and Frailty](#)

Our half-day online course where we explore key concepts and skills which are crucial in supporting our older patients - both at home and in nursing home settings. We explore real-life case scenarios and tools you can use at the surgery, on home visits or out in nursing homes. What we cover

What is normal ageing...and what isn't?

The terrible triplets - Frailty, multimorbidity and polypharmacy

How to do a really good medication review and feel good about deprescribing

The three D's of deterioration - delirium, depression and dementia

Common primary care problems - Falls.

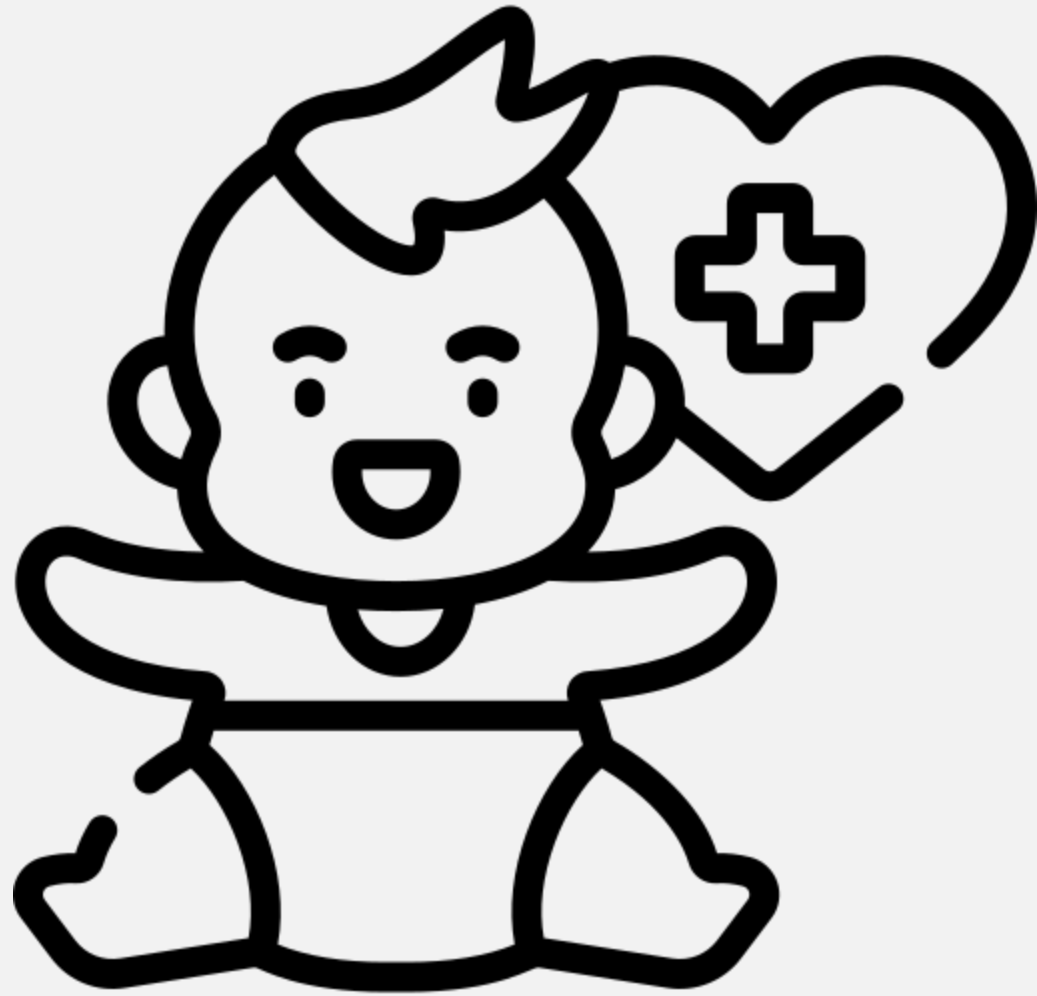
Dates: please see provider website

Provider: Red Whale

Delivery method: virtual

Level of Study: Intermediate

Paediatric



[Child and Adolescent Mental Health](#)

Our half-day online course covers key topics on child and adolescent mental health in primary care. Designed to support primary care clinicians who see and manage children and adolescents with mental health problems, to build their skills in this area. What we cover

Assessing children and adolescents with mental health concerns

Understanding the impact of adverse childhood experiences (ACEs) on mental and physical health

Building skills in the recognition and management of depression and anxiety in children and young people

Some key microskills to support young people while they wait to be seen

Spotting and referring eating disorders

Developing your skills in how to assess and support young people with self-harm

How to talk about and assess suicide risk

Understanding neurodiversity in a CAHMS setting; ADHD, autism and Tourette's disorder.

Dates: please see provider website

Provider: Red Whale

Delivery method: virtual

Level of Study: Intermediate

Respiratory



[Asthma Update](#)

This comprehensive one-day course is designed to empower registered healthcare professionals (HCPs) practicing in primary care with the latest advancements and insights in the field of asthma care. Building on the participants' existing expertise, this update day aims to enhance their proficiency in managing asthma effectively and providing the highest level of patient care. Exclusively tailored for registered healthcare professionals already experienced in asthma care within the primary care setting, this course is a unique opportunity for these practitioners to stay current with the latest developments in the field.

Dates: please see provider website

Provider: BBO Training

Delivery method: virtual

Level of Study: Update

[COPD Update](#)

Join us for a comprehensive and enriching COPD Update Day, specifically designed for Registered Healthcare Professionals who are currently practicing in the field of Chronic Obstructive Pulmonary Disease (COPD). This course aims to enhance your existing knowledge and skills, keeping you up-to-date with the latest developments in COPD management.

Dates: please see provider website

Provider: BBO Training

Delivery method: virtual

Level of Study: Update

[Introduction to Asthma](#)

This two-day Introduction to Asthma course is specifically designed for healthcare professionals in primary care settings. It provides a comprehensive overview of asthma management, from diagnosis to ongoing patient care. This interactive course is ideal for those new to asthma care or looking to refresh their knowledge.

Dates: please see provider website

Provider: BBO Training

Delivery method: virtual

Level of Study: Introduction

[Introduction to COPD](#)

These introductory days are tailored for nurses and other healthcare professionals who are new to the realm of COPD care or have not received formal training in this area. Led by Paula Matson, a Respiratory Specialist and Practice Nurse, the program is designed to build a foundational understanding of COPD and empower participants to provide effective care to COPD patients in primary care settings. These introductory sessions offer a comprehensive journey from the fundamentals of COPD understanding to a confident approach in patient review and management, emphasizing the importance of early intervention and holistic care in primary care settings.

Dates: please see provider website

Provider: BBO Training

Delivery method: virtual

Level of Study: Update

[Asthma Update](#)

The focus of this course is:

- a revision of early and accurate diagnosis in children and adults, and appropriate management tailored to individual patient needs and preferences
- an evaluation of contemporary issues in asthma care including risk management, environmental considerations, remote consultations and treatable asthma traits.

This course is suitable for health professionals experienced in managing patients with asthma who have previously completed foundation/diploma level asthma training.

Dates: please see provider website

Provider: Rotherham Respiratory

Delivery method: virtual

Level of Study: Update

[Bronchiectasis](#)

This course is suitable for any healthcare professional working in primary care / community settings, who is involved in the care of patients with bronchiectasis. The course covers epidemiology, pathophysiology, diagnosis, treatment options, self management strategies, and exacerbations management. The course has been designed by an experienced respiratory nurse who strives to improve the quality of life of patients living with a respiratory disease.

7.5 hours course with 1 month to complete

Dates: please see provider website

Provider: Rotherham Respiratory

Delivery method: virtual

Level of Study: Update

[COPD Update](#)

The course provides an overview of current developments in COPD care. Students will revisit the importance of history taking and the use of quality assured spirometry, and other tests, that promote safe and accurate diagnosis. They will learn about updated COPD management guidelines, exploring the evidence base for lifestyle interventions and appropriate drug therapy to reduce the burden and risks associated with COPD.

Course materials will promote the use of a structured COPD review to provide effective care for patients at all stages of disease, including acute exacerbation management. The course content is mapped to nationally recognised standards and professional codes, and successful completion will equip students with the knowledge and skills to improve guideline-based care and further develop their professional practice.

7.5 hours course with 1 month to complete

Dates: please see provider website

Provider: Rotherham Respiratory

Delivery method: virtual

Level of Study: Update

[Introduction to Paediatric Asthma](#)

Asthma is the most common medical condition in children and young people; it is vital that all healthcare professionals working with this age group appreciate and understand the diagnostic process and appropriate management options for individual children. This course provides an introduction to asthma in children and young people and will enable healthcare professionals to apply their learning to real world clinical practice. The value of integrated care, and how healthcare professionals in primary and secondary care as well as schools and emergency/ambulatory settings, can work together is explored.

7.5 hours course with 1 month to complete

Dates: please see provider website

Provider: Rotherham Respiratory

Delivery method: virtual

Level of Study: Intermediate

[Asthma Foundation](#)

This course offers an overview of asthma and the impact that it has on health and wellbeing in patients of all ages. The focus of this course is early and accurate diagnosis, appropriate management tailored to individual patient needs and preferences, and the avoidance of asthma attacks/asthma deaths through supported self-management, early interventions and effective organisation of care.

15 hours course with 2 months to complete

Dates: please see provider website

Provider: Rotherham Respiratory

Delivery method: virtual

Level of Study: Foundation

[COPD Foundation](#)

This professional education module aims to give students an understanding of the foundations of COPD care and provides an overview of the disease and its impact. Students will gain an understanding of how history taking and important diagnostic tests, such as spirometry, are used to ensure safe and accurate diagnosis. They will appreciate and apply the principles of COPD management, using lifestyle change and appropriate drug therapy to reduce the burden and risks associated with COPD, learning how to effectively review and care for patients at all stages of disease, including acute exacerbation management.

15 hours course with 2 months to complete

Dates: please see provider website

Provider: Rotherham Respiratory

Delivery method: virtual

Level of Study: Foundation

[Interstitial Lung Disease \(ILD\)](#)

This module aims to give students an understanding of the foundations of care for patients with interstitial lung diseases. The course provides an overview of the prevalence of different ILDs and their impact. Students will gain an understanding of the importance of safe and accurate diagnosis. Current evidence on ILD management will be explored, including the role of non-pharmacological approaches and the importance of supportive care.

15 hours course with 2 months to complete

Dates: please see provider website

Provider: Rotherham Respiratory

Delivery method: virtual

Level of Study: Foundation

[Advancing Paediatric Asthma Care](#)

This course will provide the outcomes of evaluating the impact of asthma on children and their families, local health services and their local community.

Learners will:

- Consider environmental issues and their relationship with asthma care
- Distinguish factors underlying the quality and accuracy of asthma diagnosis
- Create comprehensive individualised management plans for a range of patients
- Apply evidence and guideline-based recommendations to acute asthma management and follow up care in all settings
- Identify, assess and manage children with severe asthma appropriate to their healthcare setting and clinical role

30 hours course with 4 months to complete

Dates: please see provider website

Provider: Rotherham Respiratory

Delivery method: virtual

Level of Study: Advanced

[Advancing Asthma Care](#)

This course moves beyond the basics of asthma focusing on developing knowledge and skills to enable translation of learning to the delivery of high-quality care in clinical practice.

You will learn:

- How to evaluate the impact asthma has on individuals, local health services and their local community
- Distinguish factors underlying the quality and accuracy of asthma diagnosis
- Create comprehensive, individualised, management plans for a range of patients
- Compare types of asthma and emerging precision medicine therapies
- Apply evidence and guideline-based recommendations to acute asthma management and follow up care in all settings
- Analyse personalised care approaches in supporting patients to self-manage their asthma

45 hours course with 4 months to complete

Dates: please see provider website

Provider: Rotherham Respiratory

Delivery method: virtual

Level of Study: Advanced

[Advancing COPD Care](#)

This module aims to give an in-depth understanding of the breadth of COPD.

Content includes:

- How history taking and important diagnostic tests, such as spirometry, are used to ensure safe and accurate diagnosis
- How to appreciate and apply the principles of COPD management, integrating behaviour change theory, lifestyle adaptations and appropriate drug therapy
- How to effectively review and care for patients at all stages of disease, including acute exacerbation management and palliative care
- Important interventions such as pulmonary rehabilitation
- Managing respiratory failure, with reference to current evidence and guidance
- The impact of COVID-19 on COPD care

45 hours course with 4 months to complete

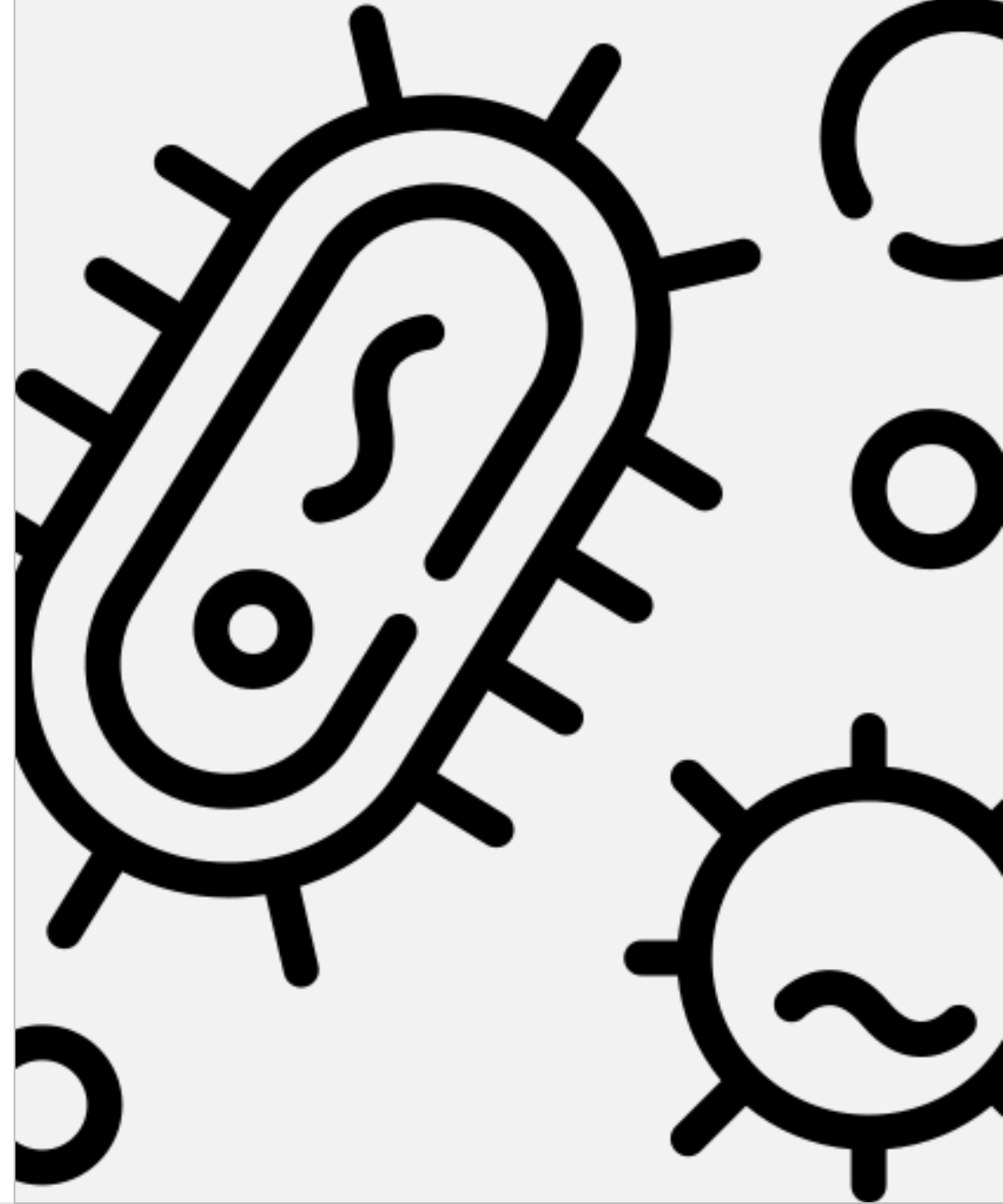
Dates: please see provider website

Provider: Rotherham Respiratory

Delivery method: virtual

Level of Study: Advanced

Sepsis



[Recognising a Patient with Sepsis](#)

This one-day course is about recognising the early signs of sepsis in a patient, with the aim of preventing it from developing into a more serious condition. Healthcare Associated Infections are becoming an increasing problem in healthcare, particularly with the development of antibiotic resistance.

Dates: please see provider website

Provider: M&K Update Ltd

Delivery method: virtual

Level of Study: Intermediate

Sexual Health



[Sexual Health Course for Nurses and AHPs](#)

A two-day programme designed to develop awareness, skills and knowledge for the delivery of a coordinated sexual health service. Will appeal to practice nurses, youth workers and other health and social care workers involved in sexual health.

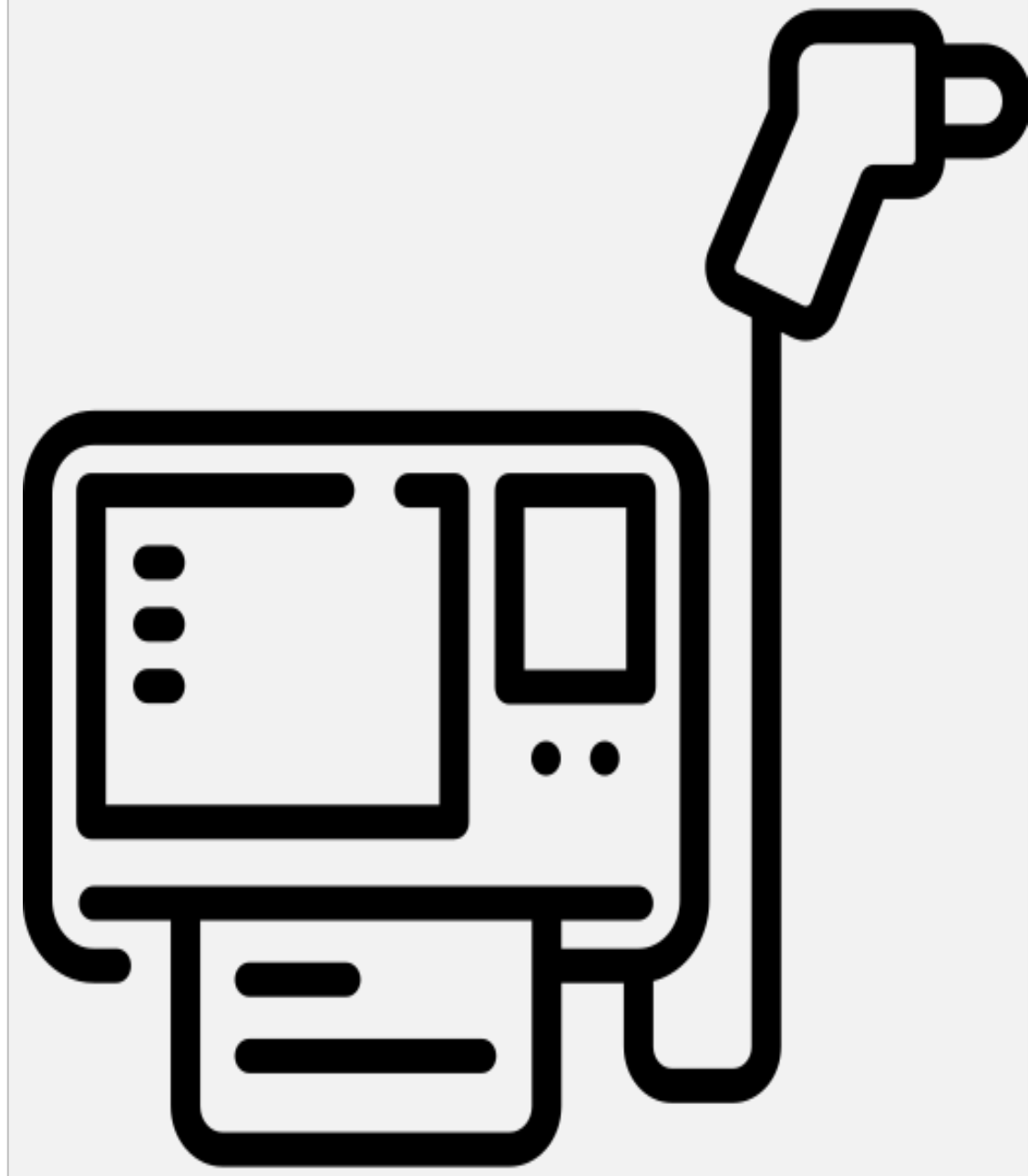
Dates: please see provider website

Provider: M&K Update Ltd

Delivery method: virtual

Level of Study: Intermediate

Spirometry



[Spirometry Reporting & Interpretation the 7 steps](#)

Aimed at healthcare professionals who do not perform spirometry but are required to oversee results and prepare a clinical report (ARTP website). It can also be used by those who have previously undertaken spirometry training or education and now wish to focus on the results of the test.

This course looks at spirometry interpretation and clearly defines the difference between numerical reporting and clinical interpretation leading to diagnosis. It will help to prepare you for the reporting only part of the ARTP register by teaching a systematic approach and using case studies to support reflective practice.

7.5 hours course with 1 month to complete

Dates: please see provider website

Provider: Rotherham Respiratory

Delivery method: virtual

Level of Study: Introduction

[Performing Paediatric Spirometry](#)

Spirometry is not just for adults - children and young people can also perform spirometry. Understanding respiratory illness at an earlier stage can be vital in maintain health throughout younger years, but also in adulthood. Although the equipment and the test itself do not differ entirely from adult spirometry, there are some key differences those working with Children and Young people need to be aware of to get the most accurate results possible.

The course content follows the Association of Respiratory Technology and Physiology (ARTP) standards for spirometry, which are the gold standard in the UK.

7.5 hours course with 1 month to complete

Dates: please see provider website

Provider: Rotherham Respiratory

Delivery method: virtual

Level of Study: Introduction

[Reporting Paediatric Spirometry](#)

This course is aimed at anyone reporting spirometry with children and young people (CYP). It may be that you do also perform, or your role may be only to report the trace. This course will follow our very successful Seven steps to success format to ensure that a trace is fit for purpose and then is reported. As with all our spirometry courses it will prepare delegates for ARTP assessment with awareness of their requirements.

7.5 hours course with 1 month to complete

Dates: please see provider website

Provider: Rotherham Respiratory

Delivery method: virtual

Level of Study: Introduction

[Spirometry Update](#)

This course is aimed at anyone who has previously undertaken spirometry training or education and is feeling a little 'out of practice' or 'rusty'! It can serve as revision for those who have been practising for many years but aims to also provide new and thought provoking content to challenge the way you practice.

7.5 hours course with 1 month to complete

Dates: please see provider website

Provider: Rotherham Respiratory

Delivery method: virtual

Level of Study: Update

[Spirometry Performing and Reporting](#)

This course is aimed at anyone undertaking spirometry who wishes both perform and undertake basic numerical reporting of spirometry. It clearly defines the difference between reporting and interpreting and can serve as revision for those who have been practising for many years.

This course will prepare delegates for ARTP assessment for the Spirometry and Reporting part of the register. As the ARTP are the ONLY current assessors of competence all training providers will be working towards that assessment.

15 hours course with 2 months to complete

Dates: please see provider website

Provider: Rotherham Respiratory

Delivery method: virtual

Level of Study: Foundation

[Spirometry: Performing Only](#)

This course is aimed at anyone undertaking spirometry who have no wish or need to undertake reporting or clinical interpretation. It can serve as revision for those who have been practicing for many years or as an introduction for those who have never undertaken spirometry before.

15 hours course with 2 months to complete

Dates: please see provider website

Provider: Rotherham Respiratory

Delivery method: virtual

Level of Study: Foundation

[Advancing Spirometry](#)

The content of this spirometry course will enable learners to confidently perform and report spirometry whilst at the same time providing them the underpinning knowledge to question the diversity of guidance and practice, whether reviewing evidence or peer performance.

The course will prepare delegates for portfolio assessment. Throughout the course learners will collate a reflective learning log which will contain key documents, reflections and understanding required to take the ARTP assessment, but will also enable the learner to appreciate the difference between numerical reporting and clinical interpretation using current, 'real life' anonymised case studies.

45 hours course with 4 months to complete

Dates: please see provider website

Provider: Rotherham Respiratory

Delivery method: virtual

Level of Study: Advanced

Supporting Staff



Root Cause Analysis

This one-day workshop designed specifically for healthcare professionals to meet the standards of the NHS Serious Incident Framework. The day will provide clinical leaders with practical skills to enable them to undertake a root cause analysis and develop an action plan in order to improve quality and safety in their clinical setting.

Dates: please see provider website

Provider: M&K Update Ltd

Delivery method: virtual

Level of Study: Advanced

Teaching and Training Skills

This two-day course has an emphasis is on competence, fitness to practice and life-long learning. Underpinning this is that clinical specialists and experts take the lead in teaching and training to develop knowledge and skills. However, not everyone has the tools to teach knowing how to is the key to successful learning, this programme is designed to Train the Trainer.

Dates: please see provider website

Provider: M&K Update Ltd

Delivery method: virtual

Level of Study: Intermediate

[Clinical Supervision - Training for Supervisors | M&K Update](#)

This one-day workshop is designed for Nurses and Allied Health Professionals.

Clinical supervision is the term used to describe a formal process of professional support and differs from line management and the supervision of learners and students.

It provides a confidential environment for staff to:

Reflect on and review their practice.

Discuss their mental health and well being

Develop their analytical skills

Change or modify their practice

Build their confidence

Dates: please see provider website

Provider: M&K Update Ltd

Delivery method: virtual

Level of Study: Advanced

[Personal and Professional Practice for Patient Safety](#)

This stand-alone module will provide nurses and allied health professionals, working in their first two year of clinical practice, with a framework for decision making, an understanding of the NHS patient safety strategy and its implications for their own clinical practice. Students will have the opportunity to critically appraise and apply theoretical concepts to practice. They will expand their understanding of accountability and competence to adopt sound, consistent, proportionate and ethical approaches to clinical decision making.

Dates: please see provider website

Provider: University of Winchester

Delivery method: virtual

Level of Study: Level 7

Supervision



[Resilience Based Clinical Supervision](#)

FoNS are delighted to provide a programme which is delivered virtually, comprising of 13 hours participated learning spread over 5 days.

To enable clinical educators, advanced practitioners and those already familiar with models of clinical supervision or reflection (Champions), to develop the necessary knowledge, skills and confidence to implement RBCS (Cascade) across practices/PCNs and/or organisations.

This supports the development of a resilient organisation and workforce, who are able to protect themselves from the emotional and physiological impacts of their roles and develop cognitive transformation practices, education and environmental support.

Please choose one cohort with dates stipulated and remember each date within that cohort has required attendance.

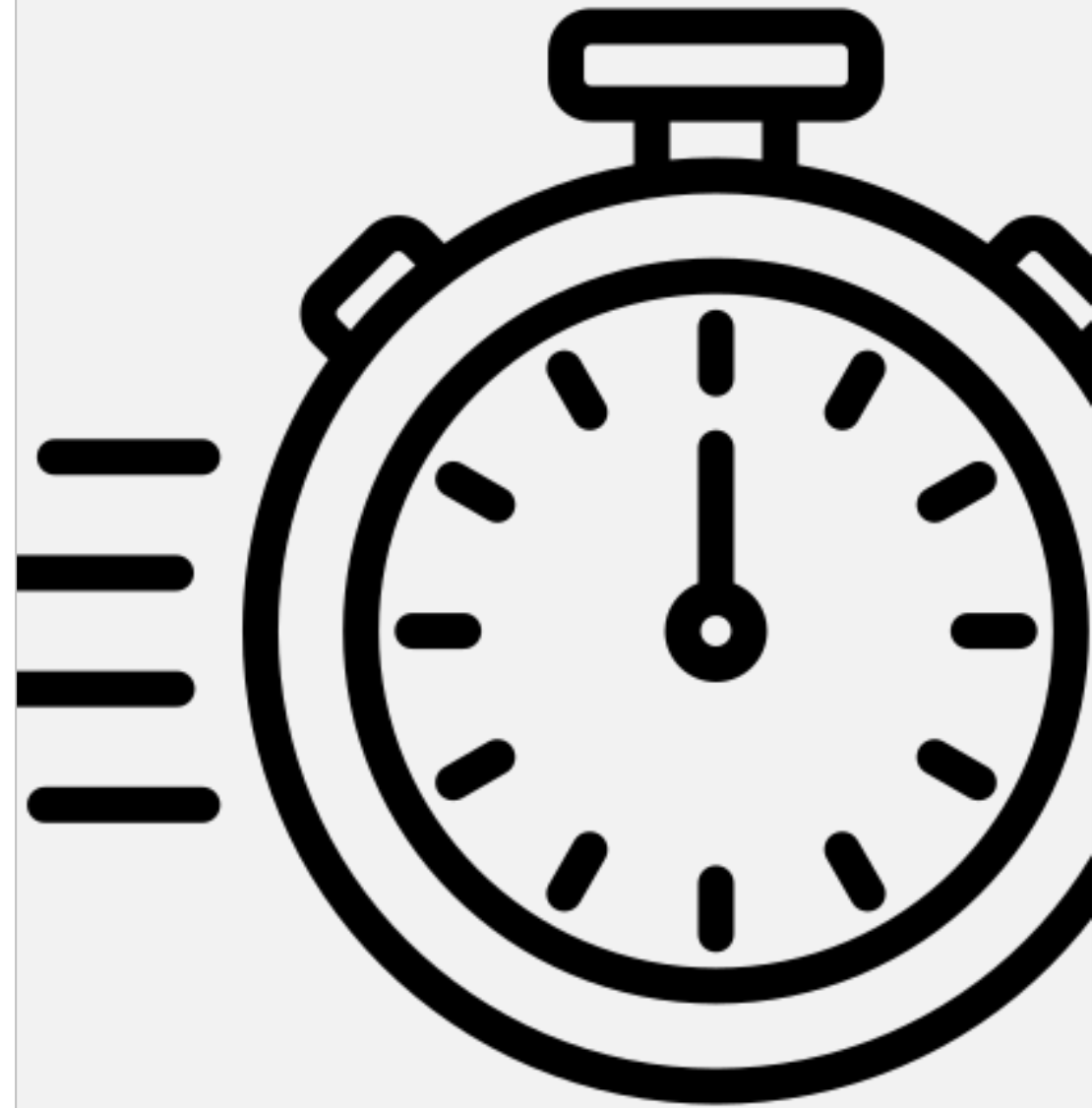
Dates: please see provider website

Provider: Foundation of Nursing Studies (FoNS)

Delivery method: virtual

Level of Study: Intermediate

**Urgent and on the
Day**



[Urgent and on the day Primary Care](#)

Our one-day online Urgent and On-The-Day Primary Care course is jam-packed with more than 30 topics and is designed to suit the needs of the whole multidisciplinary primary care team.

What we cover:

- An approach to fever in kids
- Cough in children - Bronchiolitis, croup and viral wheeze
- Breathlessness - Acute asthma and COPD exacerbation
- Ear issues - Otitis media and externa; Sudden hearing loss
- Sore throats
- Back pain - Cauda equina syndrome and spinal cord compression
- Pain when walking - Limp in children; Gout; Cellulitis
- Belly pain - Ectopic pregnancy; Acute scrotal pain; Pelvic inflammatory disease
- Pain when peeing - All things UTI
- Eye issues - Conjunctivitis; Giant cell arteritis
- Rashes - Chicken pox and shingles PEP
- Anaphylaxis and BLS update
- Venous thromboembolism (DVT & PE)
- Delirium
- Bites
- Fits and funny turns in children
- Diagnosis of diabetes in children
- Bacterial meningitis and meningococcal disease
- Headaches
- Dermatology with 'Spot the Rash'.

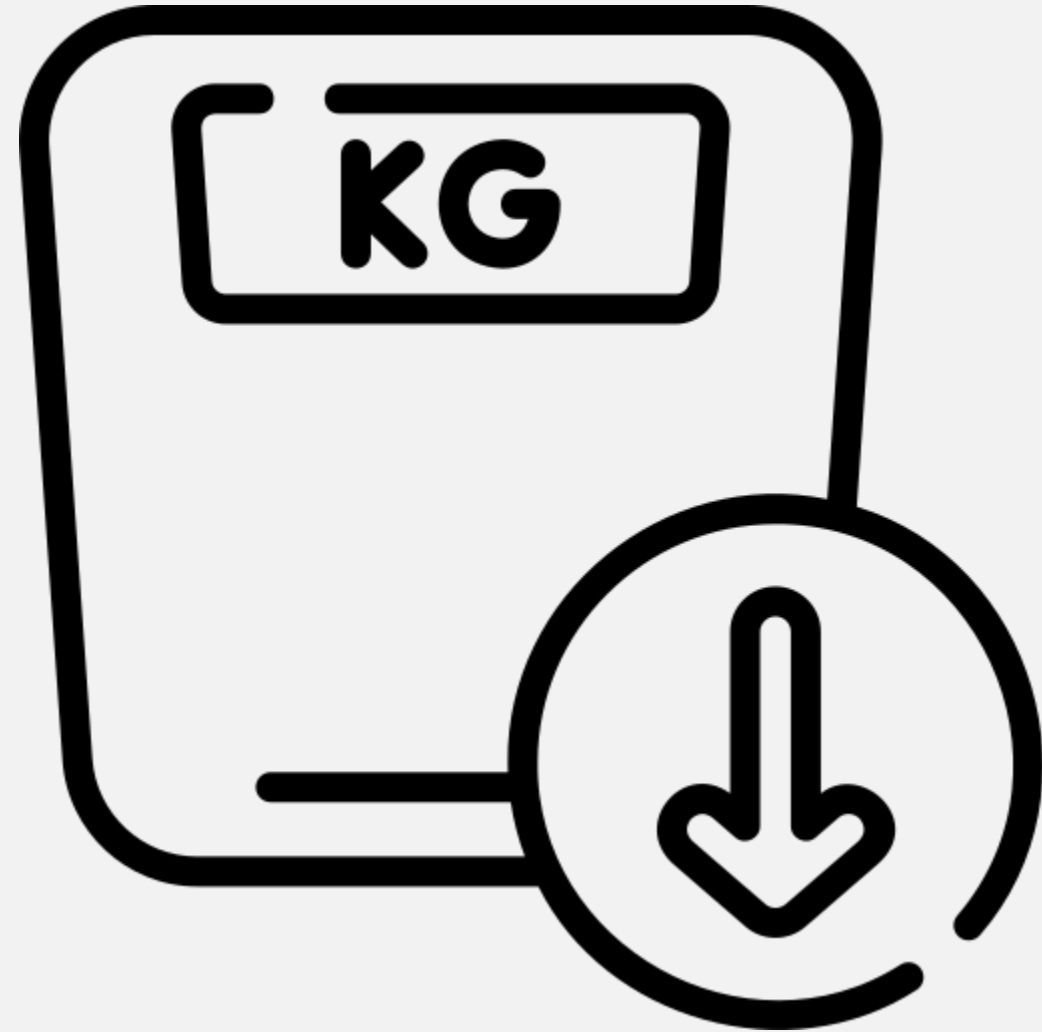
Dates: please see provider website

Provider: Red Whale

Delivery method: virtual

Level of Study: Intermediate

Weight Management



[Obesity Medicine: Weight Management, GLP-1s and Beyond](#)

Our one-day online Obesity medicine course will help you transform your practice and patient outcomes in this fast-evolving field of medicine. Learn about the latest in holistic obesity management and treatment strategies, and discover innovative, evidence-based methods to enable us to offer better patient care and improved outcomes.

What we cover

- Understanding obesity: explore the underlying pathophysiology and social determinants
- Changing pharmacological landscape: gain insights into the mechanisms, safety profiles and clinical applications of new obesity medications, including the practicalities of prescribing
- Case-based learning: analyse real-world examples and patient scenarios to see how emerging therapies are applied in practice, plus hear patient insights as they share their experiences
- Lifestyle and behavioural interventions: learn strategies for integrating nutritional counselling, physical activity, sleep hygiene and behavioural therapy into treatment plans
- Managing comorbidities: understand the relationship between obesity and related conditions such as diabetes, cardiovascular disease and mental health
- Confident conversations and coaching skills: learn from behaviour-change experts Dr Hart and Dr Williams, with practical tips to help you embed coaching frameworks into clinical practice.

Dates: please see provider website

Provider: Red Whale

Delivery method: virtual

Level of Study: Advanced

Women's Health



[Cervical Cytology Update for Primary Care Professionals \(RCN accredited\)](#)

This course has been developed in line with the NHS Cervical Screening Programme and meets the requirements for the three-yearly update for cervical sample takers.

This session offers clinician-led learning, with the opportunity to discuss real-world scenarios, explore common challenges, and reflect on individual practice.

2025 screening interval changes and HPV pathway updates

- Practical aspects of sample taking and improving sample quality
- Governance, documentation and failsafe responsibilities
- Managing more complex or nuanced clinical scenarios

This course is suitable for clinicians who are already trained and currently undertaking cervical screening.

Dates: please see provider website

Provider: BBO Training

Delivery method: virtual

Level of Study: Update

[Contraception and Sexual Health in Primary Care](#)

Our half-day online course is a comprehensive, relevant and pragmatic update on contraception and female sexual health issues in primary care.

What we cover

- Emergency contraception and quick-starting
- What's new in the world of contraception: LARC and Intrauterine system update, progestogen only pills, Combined hormonal contraception, injectables
- Medical problems, drugs and contraceptive choices
- Contraception in women with a history of migraine
- Approaching bleeding issues on contraception
- Investigation and management of vaginal discharge – including bacterial vaginosis, trichomonas, candida and infections
- Acute pelvic pain and pelvic inflammatory disease
- 'Bad sex' - dyspareunia and psychosexual issues..

Dates: please see provider website

Provider: Red Whale

Delivery method: virtual

Level of Study: Intermediate

[Contraception and Sexual Health in Primary Care](#)

The primary objective of this course is to empower qualified nurses to deliver exceptional contraceptive and reproductive sexual health services in collaboration with their medical colleagues within the Primary Care setting. This course endeavours to raise awareness of sexual and contraceptive health issues within this patient group and foster safe practice through the utilisation of Patient Group Directions (PGDs) and protocols.

Dates: please see provider website

Provider: BBO Training

Delivery method: face to face, The Lambert Hotel

Level of Study: Intermediate

[Contraception Update](#)

An update day that covers the latest information and updates in the field of contraception. This training is ideal for healthcare professionals who are already practicing in the area of contraception and are seeking to enhance their knowledge and ensure they are delivering the most up-to-date advice to their patients. The course covers all contraceptive methods, including emergency contraception, long-acting reversible contraceptives (LARC's), injectables, and oral contraception.

Dates: please see provider website

Provider: BBO Training

Delivery method: virtual

Level of Study: Update

[Gynaecology for Nurses and AHPs](#)

This full-day interactive training session is designed for a mixed audience of healthcare professionals, including nurses and AHPs working in women's health. We follow a fictional patient, as she journeys from menarche through to older age, exploring gynaecological health, contraception, fertility, menopause and pelvic health.

Dates: please see provider website

Provider: BBO Training

Delivery method: virtual

Level of Study: Introduction

[Heavy Menstrual Bleeding](#)

This half-day standalone course is designed specifically for Nurses and Allied Health Professionals (AHPs) working in General Practice. The session provides an evidence-based overview of two common but often under-recognised conditions in women's health: Polycystic Ovary Syndrome (PCOS) and Heavy Menstrual Bleeding (HMB). The focus is on building practical confidence in recognising symptoms, conducting structured assessments, and understanding first-line management options within primary care. A key theme of the session is clinical safety – knowing when red flags indicate the need for GP review or referral to Gynaecology.

Dates: please see provider website

Provider: BBO Training

Delivery method: virtual

Level of Study: Introduction

[Introduction to Contraception for Healthcare Professionals](#)

This course is specifically tailored for Primary Care staff who are seeking to expand their understanding of basic contraceptive advice. During this training, we will cover all contraception methods, including long-acting reversible contraceptives (LARC's), emergency contraception, and basic asymptomatic sexually transmitted infection (STI) screening.

Dates: please see provider website

Provider: BBO Training

Delivery method: virtual

Level of Study: Introduction

[Introduction to Menopause](#)

This comprehensive two-day course serves as an invaluable introduction to menopause care within the primary care setting. Understanding menopause, its effective management, and the ensuing implications for women's well-being are pivotal aspects for healthcare practitioners, particularly practice nurses who frequently engage with women facing menopausal transitions during their consultations.

Dates: please see provider website

Provider: BBO Training

Delivery method: virtual

Level of Study: Introduction

[LARC & IUC Removal Training](#)

Welcome to our comprehensive training in IUD/IUS removal and patient counselling. In this dynamic course, participants will delve into the essential understanding of how intrauterine devices (IUDs) and intrauterine systems (IUSs) function, emphasising their critical role in safe and effective contraceptive care. Throughout the session, attendees will gain the confidence and competence needed to conduct IUD/IUS checks and removals safely, while also exploring strategies for patient counselling to facilitate informed decision-making. With a dedicated focus on preparing patients for intrauterine contraceptive (IUC) fitting, this course aims to enhance practice efficiency and deepen participants' understanding of all long-acting reversible contraceptives (LARCs).

Dates: please see provider website

Provider: BBO Training

Delivery method: virtual

Level of Study: Advanced

[Menopause Foundation](#)

Our half-day online course covering a comprehensive, holistic and evidence informed approach to supporting women through the menopause transition. What we cover

- Definitions diagnosis and implications of menopause including the role of FSH
- Shared decision making around choices for managing menopausal symptoms and headlines from the new NICE guidelines
- A pragmatic guide to prescribing HRT, specifics of HRT regimes and troubleshooting
- Approaching and managing bleeding problems on HRT
- Alternatives to HRT
- Managing sexual problems, including the role of testosterone
- Menopause in certain groups, including women with a history of breast cancer, liver disease, premature ovarian insufficiency and endometriosis
- HRT, cognition and dementia.

Dates: please see provider website

Provider: Red Whale

Delivery method: virtual

Level of Study: Intermediate

[Menopause Masterclass](#)

This one-day Menopause Masterclass is aimed at clinicians who already have a good working knowledge of menopause management and want a deeper understanding of more complex and challenging issues, and how to approach them in a pragmatic and evidence-informed way. What we cover

Managing menopause in women with complex medical histories or at increased risk of complications: including vascular disease (heart disease, stroke and VTE), migraine, and cancer (breast and other malignancies)
Expert insights into HRT: how to prescribe safely, effectively and individually. A closer look at some of the challenges, including symptoms that persist despite HRT, when to test hormone levels and the use of off-licence regimens

Alternatives to HRT: an evaluation of the evidence and efficacy

Mental health issues: the latest guidance and emerging evidence on the psychological and cognitive side of the menopause transition

Sexual problems: including when to recommend testosterone

A holistic approach to menopause care: how to encourage and incorporate lifestyle optimisation as a core intervention for long-term health and wellbeing

Q&A-based learning: using clinical scenarios and delegate interaction to develop deeper understanding and embed skills.

Dates: please see provider website

Provider: Red Whale

Delivery method: virtual

Level of Study: Advanced

[Menopause Update](#)

This specialised training day is meticulously designed for healthcare professionals, including nurses, allied healthcare practitioners (AHPs), and general practitioners (GPs), who are already practicing in the field of menopause care. With established NICE (National Institute for Health and Care Excellence) Guidance, practitioners can gain heightened confidence in effectively managing women experiencing menopause-related issues.

Dates: please see provider website

Provider: BBO Training

Delivery method: virtual

Level of Study: Update

[Pelvic Organ Prolapse and Ring Pessary Management](#)

This half-day course is designed to empower healthcare professionals with the knowledge and skills necessary to proficiently perform ring pessary fitting and exchange. Participants will benefit from a structured learning experience that includes supervised practice to achieve competencies in this crucial aspect of women's health care.

Dates: please see provider website

Provider: BBO Training

Delivery method: face to face, The Lambert Hotel

Level of Study: Introduction

[Women's Health](#)

Our one-day online Women's Health course covering key topics for primary care. Suitable for the whole primary care team and meets the CPD requirements for recertification of DFSRH and letters of competence.

What we cover

- Update in contraception including – Drug interactions and choosing contraception, Intrauterine systems, Progestogen only pills and combined hormonal contraception, contraception options for women with migraine, contraception and HRT
- Sexual health: Causes of vaginal discharge – what to do about bacterial vaginosis, trichomonas and candida, PID and acute pelvic pain
- Primary care gynaecology - Managing period problems in adolescents, bleeding on contraception and bleeding on HRT. Endometriosis and chronic pelvic pain, management of fibroids
- Amenorrhoea – Investigation of amenorrhoea, PCOS and functional hypothalamic amenorrhoea
- Miscarriage and recurrent miscarriage – our role in primary care
- Menopause – 'Headlines' from the new NICE guidelines, HRT regimes and progestogen doses, Sexual issues and testosterone
- Pelvic floor dysfunction and urinary incontinence.

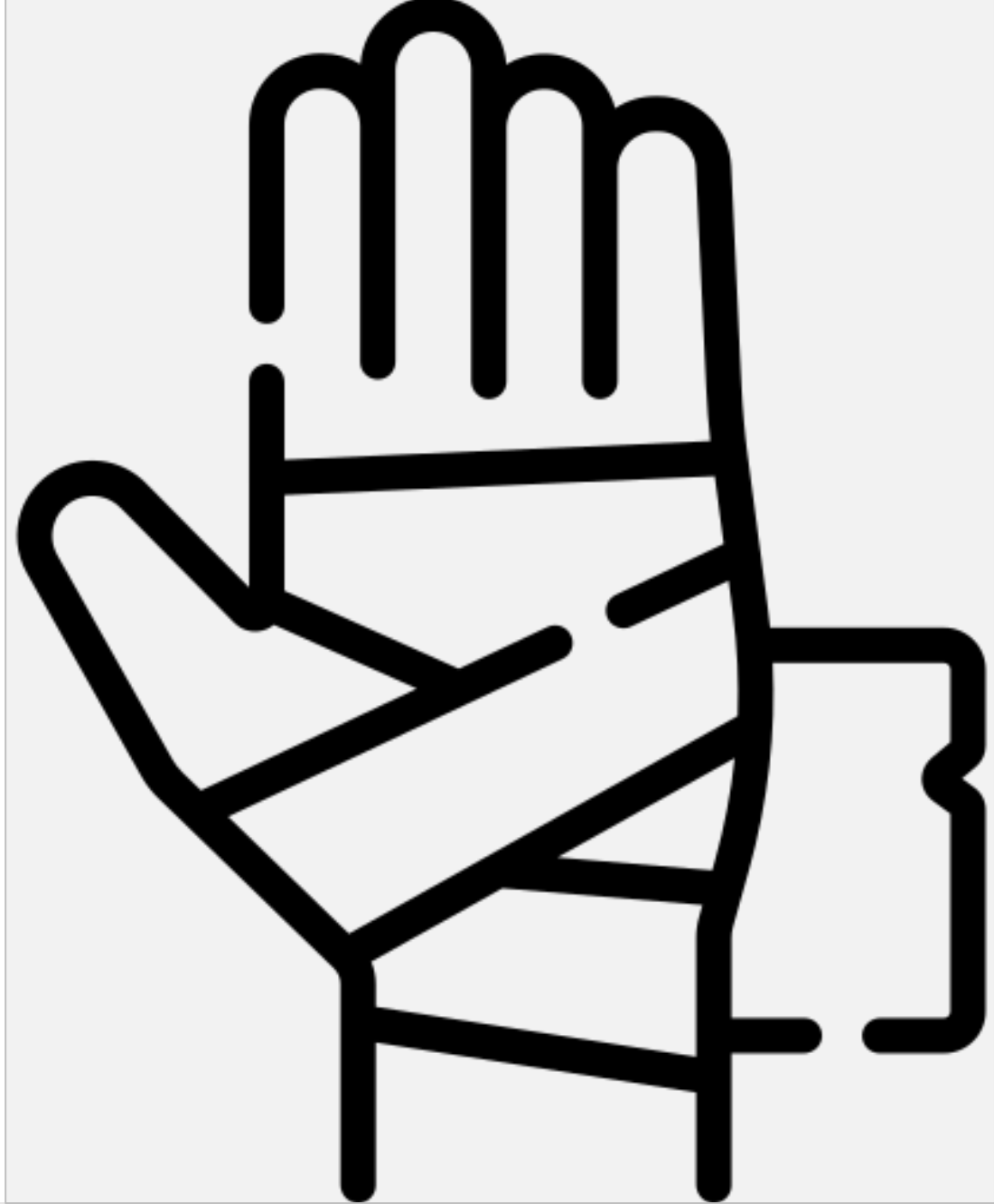
Dates: please see provider website

Provider: Red Whale

Delivery method: virtual

Level of Study: Introduction

Wound Care



[Introduction to Doppler Assessment](#)

This course covers:

- The Physiology of Arterial and Venous Conditions
- The Logic Behind Doppler Evaluations
- The Constraints and Interpretations of Doppler Assessments
- Practical Challenges and Solutions and enables you to acquire proficiency in Doppler assessment procedures

Dates: please see provider website

Provider: BBO Training

Delivery method: face to face, The Lambert Hotel

Level of Study: Introduction

[Introduction to Wound Care](#)

This interactive course is designed for nurses and healthcare professionals who are new to wound management in the Primary Care setting. The course will provide you with the knowledge and skills to confidently manage wound care for both adults and children.

Dates: please see provider website

Provider: BBO Training

Delivery method: virtual

Level of Study: Introduction

[Wound Care Update Day](#)

This update offers an opportunity to refresh and expand your understanding of key concepts and best practices of wound care, through theoretical learning and practical skill-building. Aims include improved assessment, management and prevention of complex wound conditions.

Dates: please see provider website

Provider: BBO Training

Delivery method: virtual

Level of Study: Update

[Wound Management for Nurses and AHPs](#)

This one-day course will provide the latest research and treatment guideline on wound management. To increase understanding of wound classification and the correct dressing choice for a range of wound types.

Dates: please see provider website

Provider: M&K Update Ltd

Delivery method: virtual

Level of Study: Intermediate

Management of Venous Leg Ulcers

This one-day course aims to facilitate nurses working across primary and secondary care environments to use an evidence-based approach to the management of leg ulcers. Leg ulcers affect mortality and morbidity, and evidence-based knowledge and skills can enhance their management and improve patient outcomes. Healthcare professionals are in a key position to enhance care through the evidence-based approach to leg ulcer management. Action planning will be discussed during the session for how you may achieve competence of your skills in clinical practice.

Dates: please see provider website

Provider: M&K Update Ltd

Delivery method: virtual

Level of Study: Intermediate

Principles of Leg Ulcer Management

The healthcare worker involved in leg ulcer management needs to be able to develop wound assessment skills and select from an expanding range of interventions to meet the needs of patients with ulcers of the lower limb of varying aetiology.

Dates: please see provider website

Provider: Buckinghamshire New University

Delivery method: blended, Uxbridge Campus

Level of Study: 20 credits, Level 6 or 7

[Principles of Wound Care](#)

This course is designed for registered practitioners working in any clinical environment with an interest in wound management, particularly if you're already responsible for caring for people with a variety of acute and chronic wounds. Through gaining a deeper understanding of the physiology of wounds, the impacts on wound healing and the importance of holistic assessment and treatment, you'll develop the skills, knowledge and behaviours required to deliver personalised, evidence based wound care.

Dates: please see provider website

Provider: Buckinghamshire New University

Delivery method: face to face, Uxbridge Campus

Level of Study: 20 credits, Level 6 or 7

Free CPD Resources

Course Title	Provider
Mental Health Resources For Children and Young People YoungMinds	Young Minds
Asthma (Adults) – elearning for healthcare	ELearning for Health (e-LFH)
Asthma (Children and young people) – elearning for healthcare	ELearning for Health (e-LFH)
Empowering patients to manage chronic breathlessness – elearning for healthcare	ELearning for Health (e-LFH)
Healthcare professionals Asthma + Lung UK	Asthma + Lung UK HCP hub
NCSCT e-learning	National Centre for Smoking Cessation and Training (NCSCT)
Webinars and videos Primary Care Respiratory Society	Primary Care Respiratory Society
BTS Webinars	British Thoracic Society
Range of Primary Care Courses from Future Learn	Future Learn
Range of Health and Care Courses from Nescot College	Nescot College
Education resources - The UK Sepsis Trust	Sepsis UK
Open Learn Courses	OpenLearn
e-Learning Modules – Pan London Practice Learning Group	Pan London Practice Learning Group

Summary of acronyms

Acronym	Full Text
AHP	Allied Health Professional
ARTP	Association for Respiratory Technology & Physiology
BOB	Buckinghamshire, Oxfordshire, Berkshire West
CHD	Coronary Heart Disease
CKD	Chronic Kidney Disease
COPD	Chronic Obstructive Pulmonary Disease
CPD	Continuing Professional Development
CYP	Children and Young People
DNA	Did not attend
ECG	Electrocardiogram
HCA	Health Care Assistant
HCP	Healthcare Professional
HMB	Heavy Menstrual Bleeding
IUC	Intrauterine Contraception
ILD	Interstitial Lung Disease
IUD	Intrauterine Device
IUS	Intrauterine System

Acronym	Full Text
LARC	Long-acting Reversible Contraception
MMR	Measles, Mumps and Rubella
PCOS	Polycystic ovary syndrome
PCN	Primary Care Network
PGD	Patient Group Directions
PPV	Pneumococcal polysaccharide vaccine
QR code	Quick Response code
STI	Sexually Transmitted Infection
TV	Thames Valley
TVW	Thames Valley and Wessex



england.primarycareschooltvw.se@nhs.net



[Thames Valley and Wessex Primary Care School](#)



[NHS England](#)