

Radiology Support Workers

Nicola Unwin



University Hospital Southampton

NHS Foundation Trust

Aims

Positives

Statistics

Roles and Responsibilities

Governance

Opportunities

Care
Career Flow
Cost Workforce
workload Retention
Patient & Recruitment Essential Stock
Backbone Development Important skills
Amazing Opportunity
Help. Service Effective capacity
Team Excellent

Radiology Support Workers at UHS

Band 2 WTE	Band 3 WTE	Band 4 WTE
13	34	7

Band 2 Job Role

Assist Radiographers and Radiologists during imaging procedures.

Front line patient care

Patient transfer and transport. Ward Liaison

Patient monitoring

Prep fluoroscopy trolleys

List management

Attend patients

Documentation and Administration

Restock rooms

Environmental Cleaning

Band 3 Job Role

Assist Radiographers and Radiologists during imaging procedures.

Front line patient care

Patient transfer and transport. Ward Liaison

Patient monitoring

Cannulation- insertion and removal

Initial Pre-Scan Safety Checks

Stock Control and Procurement

Documentation and Administration

eGFR point of care tests

Assessment and Training responsibilities (ANTT, CRIS)

Sterile Trolley set up

Band 4 Assistant Practitioner

Band 3 role plus:

Perform protocol-driven diagnostic imaging.

Perform imaging of non-complex patients

Work under supervision

Work within clearly defined scope of practice

Provide Aseptic Scrub Support

Support patients during invasive procedures

Quality Assurance

Band 4 Apprentice Radiographer Job Role

Band 3 role plus:

Undertake Level 6 Diagnostic Radiographer
Apprenticeship

Perform protocol-driven diagnostic imaging as
competent

Perform imaging of non-complex patients as
competent

Work under supervision

Work within clearly defined scope of practice

Quality Assurance

Band 4 Mammography Associate

Band 3 role plus:

Undertake routine 2 view mammography

Perform imaging of non-complex patients

Work under supervision

Work within clearly defined scope of practice

Provide Aseptic Scrub Support

Support patients during invasive procedures

Quality Assurance

Person Specification

Communication

Patient/Customer care experience

Previous Teamwork

IT skills

Calm under Pressure

Initiative

Calm, Friendly, Approachable

Adaptable

Qualifications

Band 2: Level 2

Band 3: Level 3 or extensive equivalent experience

Band 4: Relevant Level 5 Foundation Degree

Band 4 Apprentice: Level 3 and acceptance onto Level 6 diagnostic radiographer apprenticeship degree

Band 4 Associate Mammographer: Level 4 mammography associate program

Example of Band 3 Induction Plan

Day 1

Trust
Induction

Day 2

Local Induction. Receive Competency Work books. Explain training requirements and shifts. Advise on priority courses. Meet your Buddy
Book, ALARM, BLS, ANTT, Drug administration and IV Cannulation

1 Month Probation Review

Review Competency Work books. Identify training needs. Address gaps in training. Agree SMART objectives

3 Month Probation Meeting.

- Review Progress. Identify Training needs. Review Competency work books. Address gaps in training. Address SMART Objectives

5 Month Probation Meeting.

Review Progress. Agree competency sign off. If both parties satisfied, and SMART objectives achieved, add to full rota at 6 months.

Mobiles

DRX

189,181,182,069

Inductee: _____

Completion date:

Power Up

Emergency Locks

Tube Movement

Hard Down Power Switches

Log In

Log Off

LBD and Collimation (inc laser safety)

DR Cart Movements

Stationary Grid Use

Daily Dark Calibration

Patient Selection- Work list/Manual

Examination Selection

Edit Examination

Image acquisition-ready status

Processing for Lines

Detector Battery Status

Detector Battery Charge and replace

Cart Battery status

Exposure Selection and Adjustment

Image Rejection

Unassign/reassign Image/patient

DAP Display

ROI adjustment

Windowing Methods

Image Manipulation

Adjust Trim

Image Annotation

Image Transfer to PACS

Storage Destination

Process Viewer

Past List

Shutdown Procedure

Use of Door stops when moving machine

Retracting plug when moving and parking

Want to develop professionally?
Don't just visualise success; just do it!

There is guidance and advice available!

- Your manager at appraisal;
- The department's Education Lead;
- Careers advice from the Training & Development Team;
- Check out the National Careers Advice website for all careers in the NHS

Start as a radiography assistant and work your way up to assistant practitioner. Take the opportunity to work and study part-time for a degree and a professional qualification to become a radiographer

No qualifications?

No problem!

Start off studying with a Care Certificate at UHS; Progress with A levels or Access to health courses

Want to become a radiographer?

Possible routes:

- a university course
- an apprenticeship
- working towards this role

Want to undertake an apprenticeship?

You will need:

English and Maths
Level 3/4 education

For an apprenticeship you will need

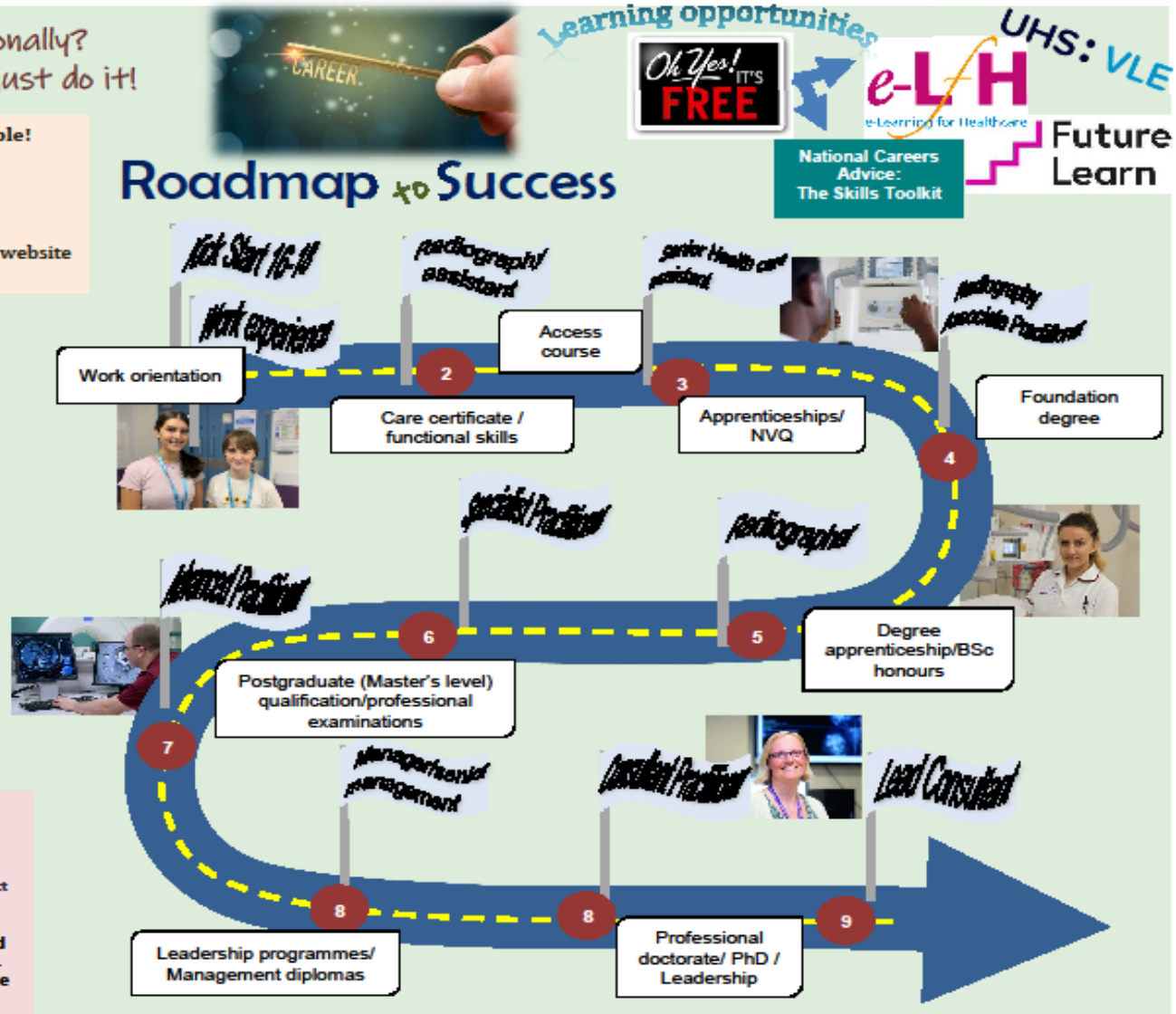
four or five GCSEs at grades 9 to 4 (A* to C) and A levels, or equivalent qualifications, for a higher or a degree apprenticeship

3 year Bachelor degree programme (4 yrs in Scotland) - Entry criteria:

- five GCSEs at grades 9 to 4 (A* to C), including English, maths, and a science
- three A levels, including at least one science subject
- if you have a degree already, consider a fast track radiography degree

240 – 300 UCAS tariff points including maths and English GCSEs and A levels in science subjects.
Or an Access course if you do not have a science background

Roadmap to Success



Opportunities

Remember sideways stretch

Progression

FD course availability and suitability

Training