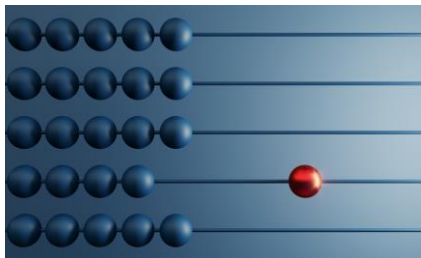


# Quality Assuring Primary Care Networks as Learning Environments



HEE Thames Valley & Wessex Primary Care School

# Context

- Health Education England (HEE) is responsible for the quality assurance of education and training of healthcare learners in England
- NHS Long Term Plan commits to bring General Practice together to work at scale:
  - Opportunities for approval of learning environments at scale such as Primary Care Networks (PCNs)
- Increased staff to be trained in Primary Care:
  - 6,000 doctors working in Primary Care and 26,000 additional roles
  - Expand educational capacity whilst ensuring quality of learning environments and educators

# The Project



To develop high quality PCN level learning environments across TVW primary care to ensure our learners have a great learning experience and want to remain or become part of the primary care workforce

Mapped to HEE Quality Strategy and Framework

**Phase 1**  
wider workforce

Educational Leadership in PCNs

Risk based approach

Pre reg., post reg., and apprenticeship learners

**Phase 2**  
GP trainees

Rolled out in other HEE regions

Increase data available to assess quality of learning in PC



# Primary Care School Offer

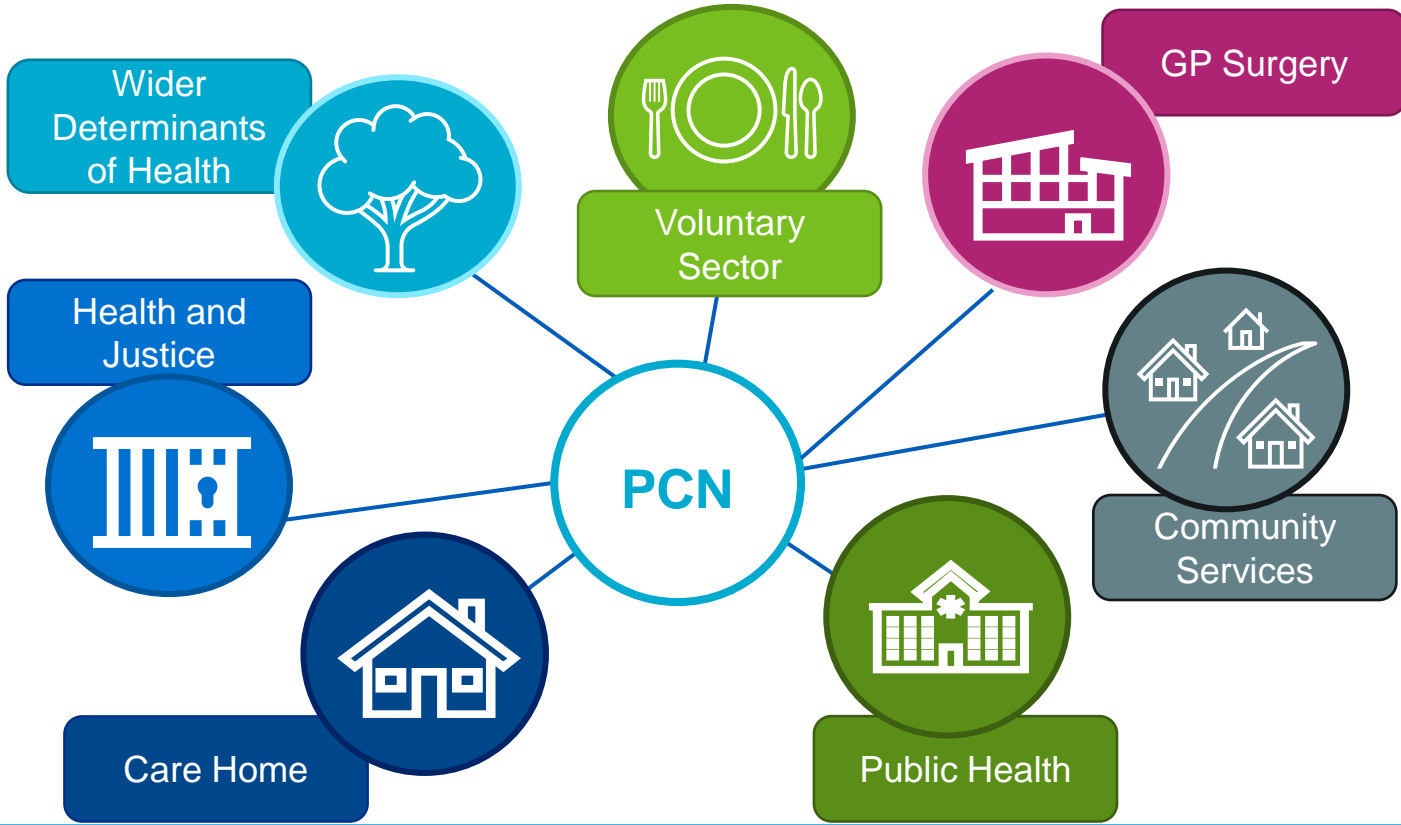
Support each PCN to become a quality assured learning environment

One off funds of £21,000 per PCN (tx before end of March 2023)

Expert advise from Primary Care School (PCS) team

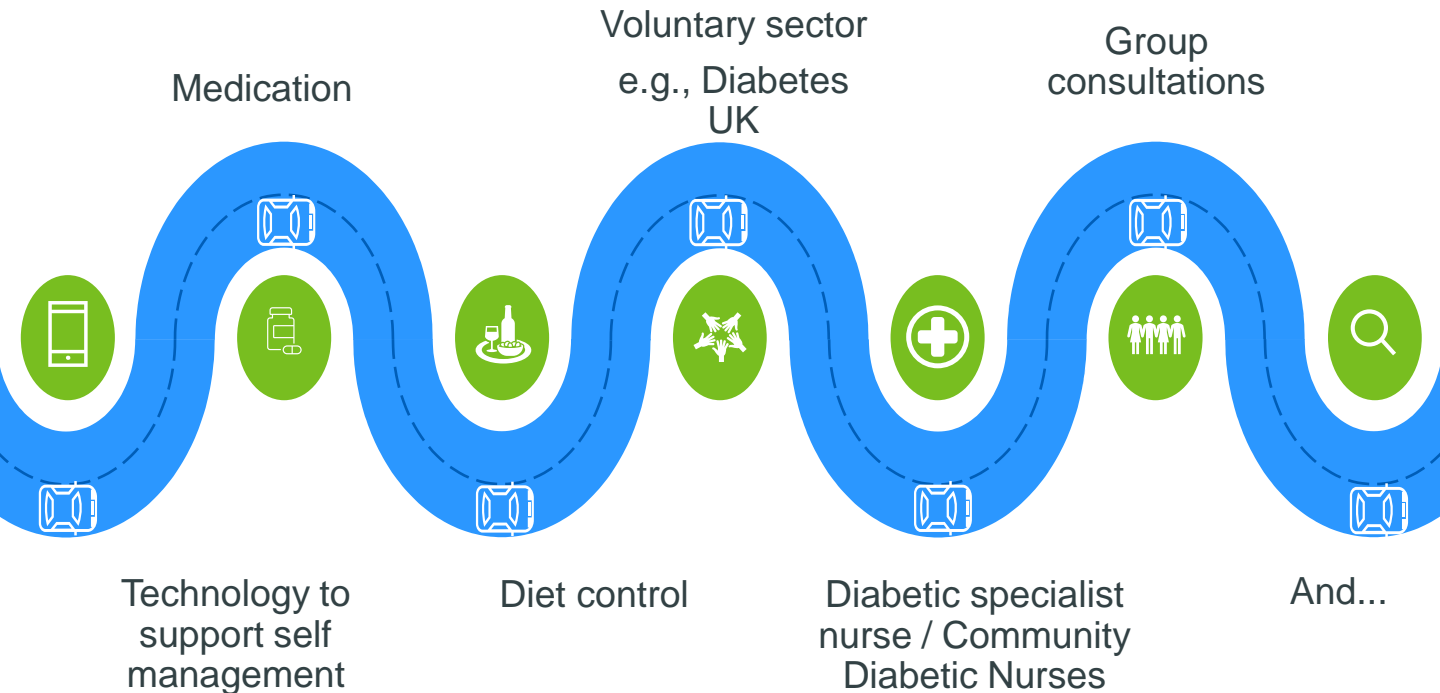
Library of resources

# Placement pathways across a PCN



# Placement Pathway by Condition

## Diabetes Pathway



# What's in it for you?

- Dedicated PCN educator and administrator time
- Enables maturing practices to experience student placements
- Increasing capacity of Primary Care learner placements
- Increasing recruitment and retention of the PCN workforce
- Enabling sharing of good practice and innovation through student interaction
- Expanding educational capacity, e.g., apprenticeships
- Expanding PCN engagement with care homes and voluntary sector
- One quality assurance process for all learners



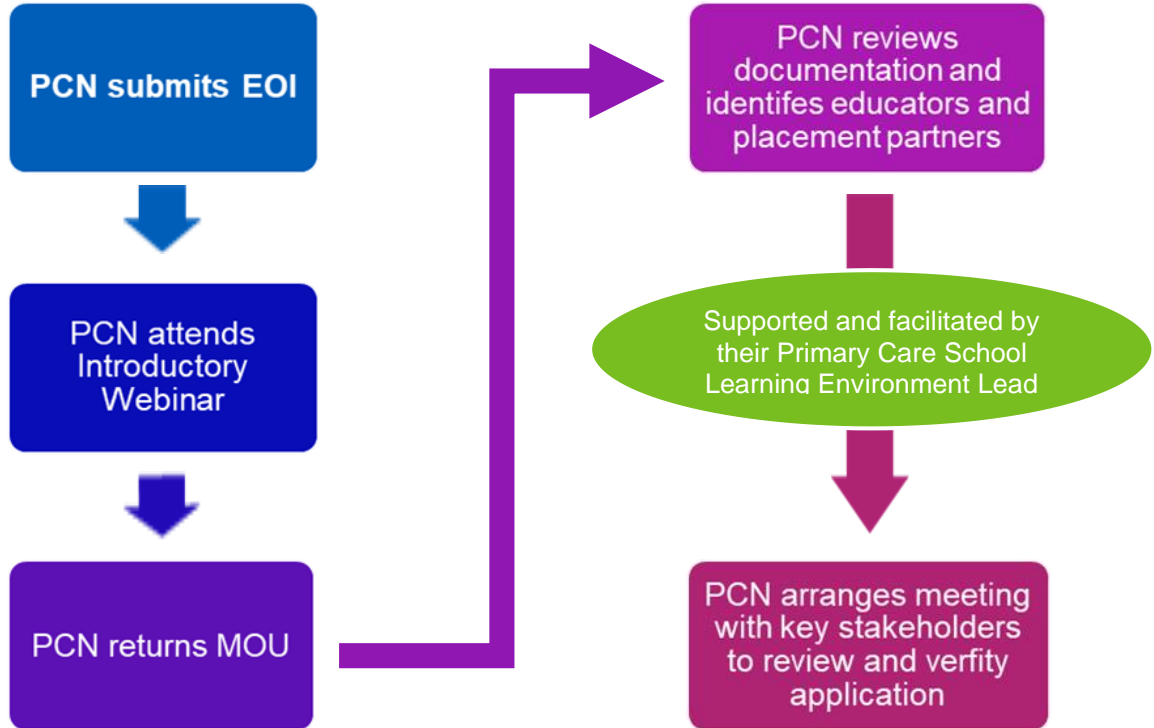
# Process before applying

- Speak to:
  - Other GP practices in your network
  - Other organisations in your network e.g., care homes, community pharmacy
  - Your local PCS Learning Environment Lead
- Consider the different types of learners your network could support:
  - Nurses
  - Physician Associates (PAs)
  - Allied Health Professionals (AHPs)
  - Pharmacists





## Simplified Process Flow Chart



# Deliverables

## PCN Overview

- Nominate a lead educator and administrator
- Identify educators in the PCN
- Complete the Thames Valley Wessex: Primary Care Learning Environment Approval Documentation
- Develop PCN placement plans / pathways

## Student support and resources

- Develop a PCN induction framework
- Develop a PCN placement profile
- Develop and maintain a PCN educator database
- Manage tariff for PCN, which supports the PCN financially

## Benefits realisation

- Dedicated PCN educator and admin time
- Promote a positive education ethos across the PCN
- Improved recruitment and retention
- Sharing of good practice and innovation
- One approval process for every student – “do it once”

## Reporting

- Quarterly reporting to HEE on project



Queries to: [primarycareschooltvw.se@hee.nhs.uk](mailto:primarycareschooltvw.se@hee.nhs.uk)