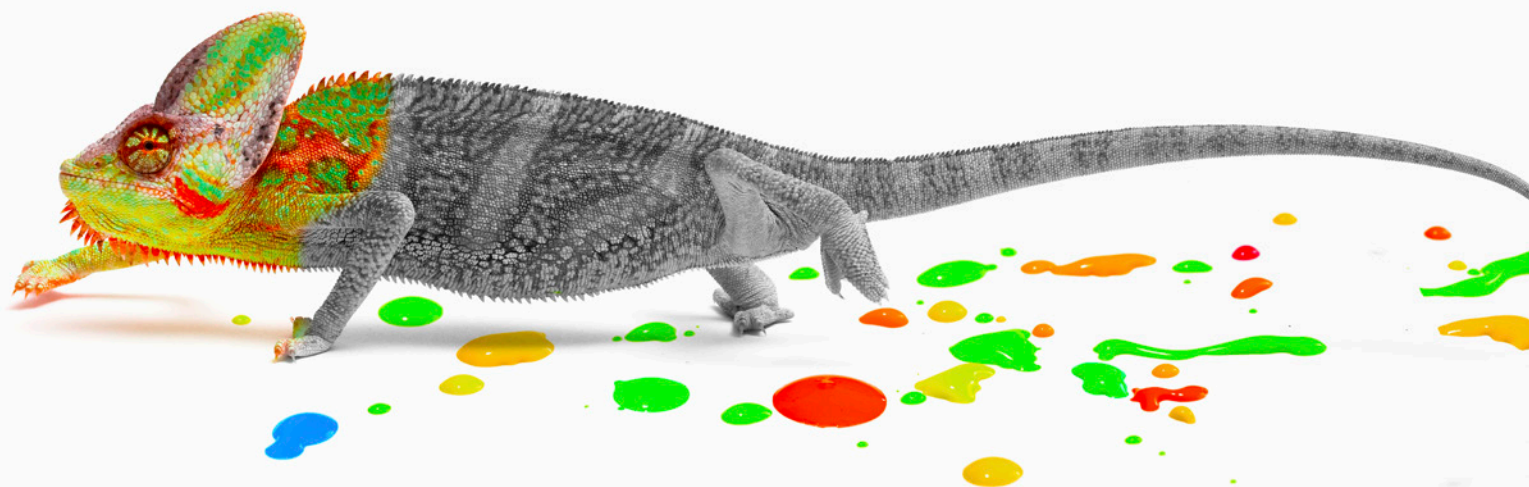


National Challenges, Wessex Solutions

Wessex Medical Educators' Forum 2018



10 and 11 January 2018

New Place, Shirrell Heath, Southampton

Developing people
for health and
healthcare

www.hee.nhs.uk

National Challenges, Wessex Solutions

Wessex Medical Educators' Forum 2018

Welcome to The Haven at New Place! I am confident that the camaraderie, enthusiasm and fun will transfer to this new venue and will continue to provide us all with the 'mental haven' that we all get from our couple of days away in January.

I hope the programme this year has incorporated feedback that we've had over the past few years – that you really appreciate time to network, chat, catch-up and think. So we have deliberately tried to build more time for self into the programme – do let us know if it works.

I am grateful to colleagues for their creativity in coming up with suggestions and new ideas for this year's Forum. The theme – National Challenges, Wessex Solutions – was borne out of a recognition that Wessex often leads the way in education and I am really privileged and proud to work with such amazing and committed people. The past year has been tough as we have implemented many cost reductions and reorganised a lot of our business – none of which would have been possible without the goodwill, tenacity and relentless cheerfulness of all of our staff and Faculty. So I would like to offer a very personal thank you to you all for helping me through my first year as Dean and for continuing to fly the Wessex flag. It has been a true privilege to work with you all.

Let's look forward to 2018 and continue to educate and support our colleagues as we continue to develop the workforce who will ultimately look after us and our families and friends.

Dr Peter Hockey

Postgraduate Dean, Health Education England, Wessex



Day 1

Wednesday 10 January 2018

Arden Suite

Time	Session	Lead
8.45am – 9.20am	Registration and Refreshments	
9.20am – 9.50am	Welcome and Review of Last Year	Dr Peter Hockey, Postgraduate Dean
9.50am – 10.25am	Table Discussions	Dr Peter Hockey, Postgraduate Dean
10.25am – 11.00am	Feedback from Table Discussions	Dr Phil Rushton, Associate Dean
11.00am – 11.30pm	Refreshments – Arden Foyer	
11.30am-1.00pm	Examples of Wessex Innovations	Miss Julia Harris, Associate Dean
	Making MSK Education Relevant - A New Community-based Approach	Dr Greg Warner, GP and Orthopaedic Physician, Orthopaedic Choice, Southern Health NHS Foundation Trust
	Acute Hospital at Home – Training Opportunities with an Innovative Service	Dr James Richards, Consultant Physician and Geriatrician, Dorset County Hospital and Dr Will Divall F2, Acute Hospital @ Home
	New Models of Care: Mind the Gap!	Dr Kate Fayers, Consultant Diabetologist, West Hampshire Community Diabetes Service
1.00pm-2.00pm	Lunch – Bristol and Dining Room in Manor House	
Afternoon Sessions – Held in Arden Suite and Business Centre		
2.00pm – 3.30pm	Making Medical Education FUN – Part 1 in Arden Suite	Dr Mike Masding, Head of Foundation School and Dr Rachel Elliott, GP Associate Dean
3.30pm – 3.50pm	Refreshments – Arden Foyer	
3.50pm – 5.00pm	Making Medical Education FUN – Part 2 in Business Centre	
5.00pm-6.00pm	Opportunity for business or School meetings in Manor House or Business Centre	
6.00pm	Drinks Reception – Arden Foyer	
6.45pm	Leadership Lecture in the Arden Suite	Professor Wendy Burn, President, Royal College of Psychiatrists
8.00pm	Dinner – Arden Suite	

Dress code: Smart casual for day sessions and smart for Wednesday evening dinner

Day 2

Thursday 11 January 2018

Arden Suite and Business Centre

Time	Session	Lead
8.45am	Registration and Refreshments	
9.00am	Welcome	Dr Jane Hazelgrove, Associate Dean
9.00am – 9.20am	Review of Day One	Miss Audrey Ryan, Associate Director of Education, Dorset County Hospital NHS Foundation Trust
9.20am – 10.20am	The Shape of Training Review – What Next?	Professor Ian G Finlay, Senior Medical Advisor, Scottish Government
10.20am – 10.40am	Refreshments – Arden Foyer	
10.40am – 11.30am	What Does this Mean for Wessex? – in the Business Centre	Workshops in Schools
11.30am – 12.15pm	Reconvene and Share Solutions – Arden Suite	Dr Jane Hazelgrove, Associate Dean
12.15pm – 12.25pm	Move to Pre-Selected Workshops – Session 1 in the Business Centre	
12.25pm – 1.10pm	Clinical Thinking	Dr Mike Masding, Head of Foundation School Dr Rachel Locke, Senior Researcher, Health Wellbeing Group, University of Winchester Dr Alice Mason, Wessex Rheumatology Registrar and Medical Education Fellow
	Dyslexia in Doctors: Managing the Condition – Findings from Wessex Based Research	Dr Gail Alexander, Dyslexia Lead Professional Development Unit (PDU) Dr Mark Ashton, Consultant for Professional Support
	Why We Need to Talk About Fatigue	Dr Mike Farquhar, Consultant in Sleep Medicine, Evelina Children's Hospital, St Thomas' Hospital, London
	Spotting and Supporting Trainees on the Autistic Spectrum: The Role of the Professional Development Unit (PDU)	Dr Stefan Gleeson, Director of Education, Consultant Psychiatrist
	Exam Support	Dr Poppy Mackie, Co-Lead for Exam Support, PDU Dr Hilary Swales, Consultant for Professional Support
	What Can We Do to Support International Medical Graduates Better?	Dr Fatima El-Bakri, Deputy Head of School, Medicine and Pathology Dr Stuart Purcell, Consultant Psychiatrist & Director of Medical Education

We have applied for CPD points for the entire event

Day 2 (continued)

Thursday 11 January 2018

Arden Suite and Business Centre

Time	Session	Lead
1.10pm – 2.15pm	Lunch – Bristol and Dining Room in Manor House	
2.15pm – 3.00pm	Pre-selected Workshops – Session 2 in the Business Centre	
3.00pm – 4.00pm	Welcome to Final Session	Dr Aileen Sced, Associate Dean
	The Future of Primary Care	Professor Helen Stokes-Lampard, Chair of the Royal College of General Practitioners
4.15pm	Summary and Close	Dr Peter Hockey, Postgraduate Dean

Dress code: Smart casual for day sessions and smart for Wednesday evening dinner

Guest Speakers

Professor Wendy Burn, President, Royal College of Psychiatrists

Wendy Burn became a Consultant Old Age Psychiatrist in Leeds in West Yorkshire in 1990 and currently works part time in a community post.

She has been involved in the organisation and delivery of postgraduate training since she started as a consultant. She has held many roles in education including College Tutor, Training Programme Director, Director of Postgraduate Medical Education, Chair of Specialty Training Committee and Associate Medical Director for Doctors in Training. She set up the Yorkshire School of Psychiatry and was the first Head of School.

On behalf of the Royal College of Psychiatrists she has been an examiner, a Senior Organiser of clinical examinations, a Deputy Convenor, Regional Co-ordinator for CPD and the Deputy Lead for National Recruitment. She was College Dean from 2011 to 2016. She became the Co-chair of the Gatsby Wellcome Neuroscience Project in 2016. In 2017 she was elected as President of the College and took office in June.



Professor Ian G Finlay, Senior Medical Advisor, Scottish Government

Professor Finlay is a Senior Medical Advisor to the Scottish Government Health Workforce and Strategic Change Directorate. In this capacity he provides policy advice across a broad range of issues encompassing medical education and training, sustainability of the medical workforce, implementation of appraisal and revalidation and on aspects of strategic service delivery.

Ian Chairs the Revalidation Delivery Board Scotland and was Medical Advisor to the Sustainability and Seven Day Services Task Force in Scotland. He is a member of the UK Medical Education Reference Group (UKMERG) and Chairs the UK Shape of Training Steering Group.

Ian has also been appointed as Visiting Professor at the University of Edinburgh.

Prior to joining Scottish Government, Ian was a consultant surgeon at Glasgow Royal infirmary for 27 years where he founded the Department of Coloproctology. He has written over 100 peer reviewed papers dealing with various aspects of colorectal disease. His seminal paper "identification of occult hepatic metastases in colorectal cancer" changed the clinical management of the disease across the World. As an NHS consultant he inspired, funded and supervised the work of 8 research fellows who obtained postgraduate degrees. He led the development of Clinical Managed Networks for Colorectal Cancer in Scotland producing one of the first governance systems to publish comparative outcomes for hospitals.

Immediately prior to joining Scottish Government, Ian was Associate Medical Director for Surgery and Anaesthetics in NHS Greater Glasgow and Clyde Health Board.

Ian is a graduate of Manchester University and undertook post graduate training in Manchester, Glasgow, London and Minneapolis.

Professor Helen Stokes-Lampard, Chair of the Royal College of General Practitioners

Prof Helen Jayne Stokes-Lampard
MBBS (Lon), FRCGP, PhD, DFSRH, DRCOG, LOC(IUS)

Twitter: @HelenRCGP



Helen Stokes-Lampard is Chair of the Royal College of General Practitioners (RCGP), the UK's largest Medical Royal College, representing over 52,000 family doctors across the UK. The Chair shapes policy and leads the strategy of the College, working with politicians, policy makers and the media to ensure that the 'voice' of general practice and GPs is understood and represented.

Helen was previously RCGP Honorary Treasurer (2012-16), the first female to hold this position. As Honorary Treasurer she had responsibility for all matters related to the College finances and assets including premises, IT and human resources.

She is a part-time GP partner at The Westgate Practice in Lichfield, Staffordshire, a friendly, dynamic group practice which she joined in 2002, having just completed her academic GP training in inner city Birmingham and at the Medical School in Birmingham University.

Prior to training as a GP, Helen worked in Obstetrics and Gynaecology for several years and this experience shaped her clinical and academic aspirations. She was a personal mentor for doctors in difficulty in the Midlands until 2016, a scheme supported by the West Midlands Deanery and RCGP Midland Faculty.

Helen was the Head of Primary Care Teaching (undergraduate) in the Medical School of the University of Birmingham until becoming RCGP Chair.

Her diverse research interests have spanned gynaecological cancer screening, all aspects of women's health, epidemiology and data linkage studies. The subject of her PhD was 'Variation in NHS Utilisation of Vault Cytology Tests in Women post-hysterectomy'.

She was Clinical Director of the accredited Primary Care Trials Unit at Birmingham until July 2012 when she resigned to allow her time to concentrate on her RCGP roles. She was also Head of the dynamic Academic GP Trainees programme at Birmingham (including MOD, NIHR and locally funded academic GP trainees). She ran an MSc module in Community Gynaecology and taught communication skills and ethics.

She is naturally enthusiastic and dynamic with a sense of humour and plenty of pragmatism.

Notes

Notes

Notes

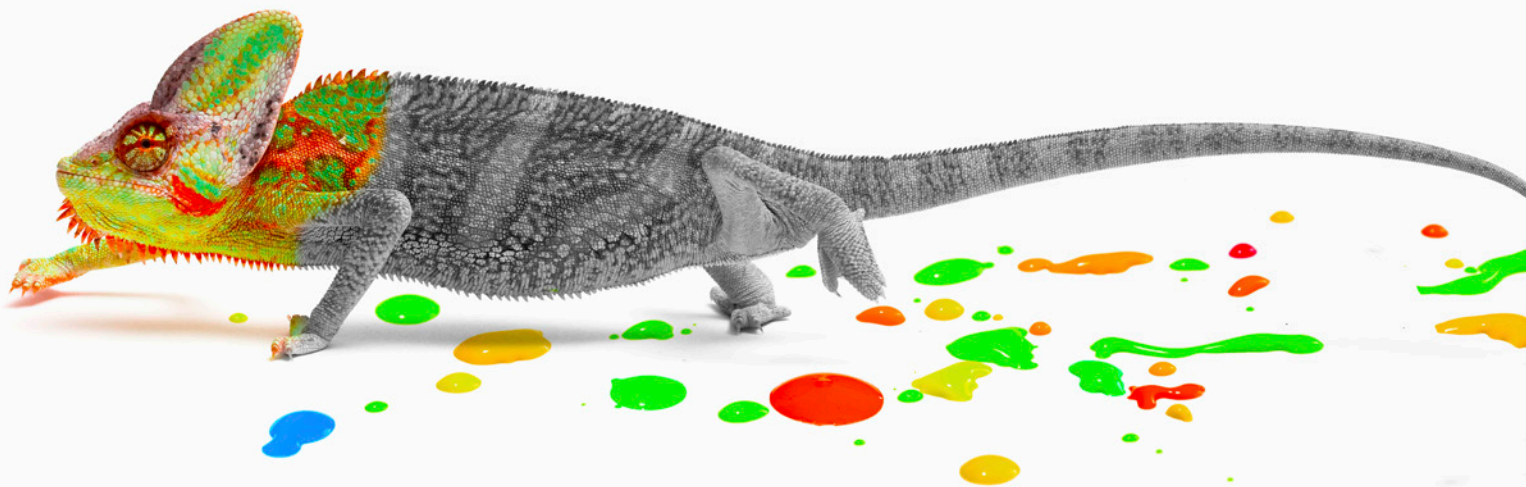
Notes

Health Education England

Southern House, Winchester, Hampshire, SO21 2RU

t: 01962 718400 f: 01962 718401

Email: reception@wessex.hee.nhs.uk



**Developing people
for health and
healthcare**

www.hee.nhs.uk